

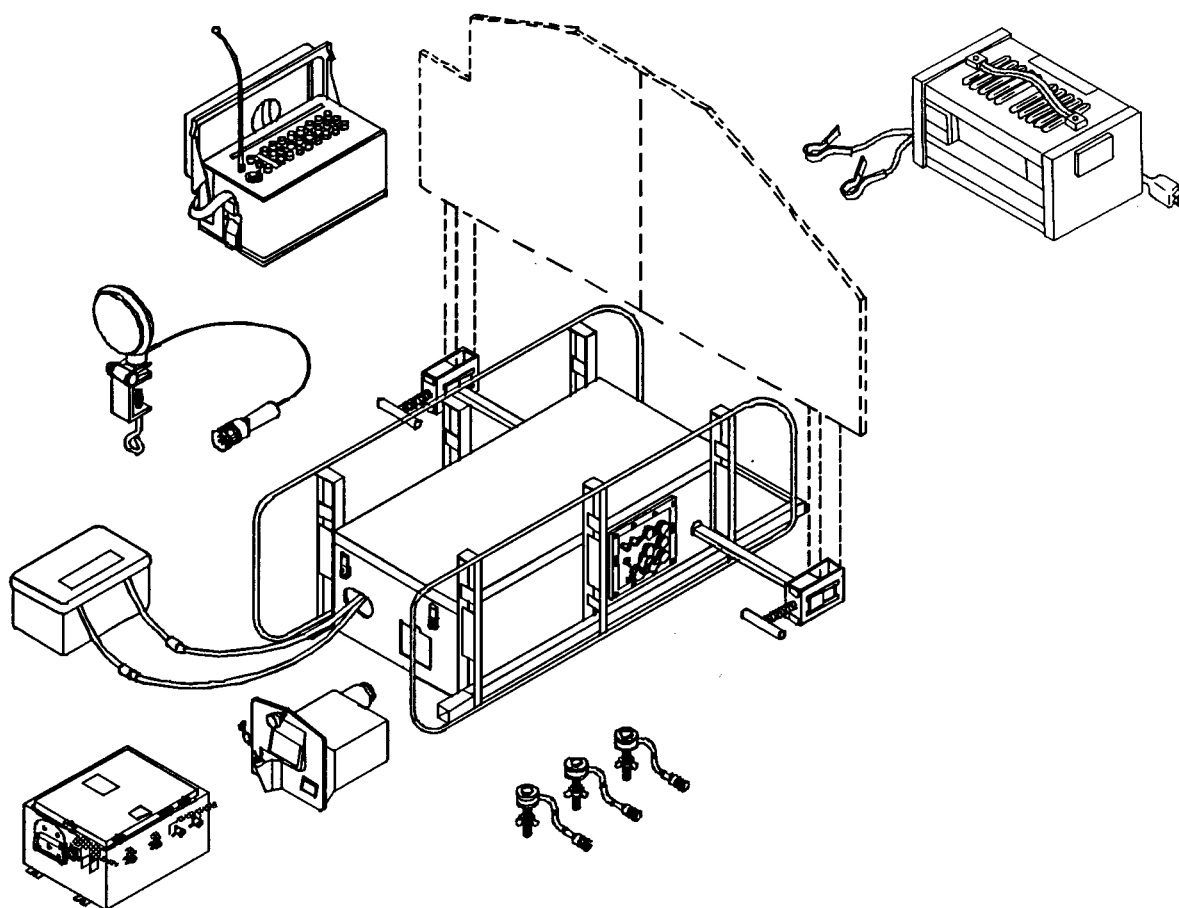
SUPERSEDES TM 9-6920-442-14&P, DATED 29 DECEMBER 1987

TECHNICAL MANUAL

UNIT, DIRECT SUPPORT, AND GENERAL SUPPORT MAINTENANCE  
REPAIR PARTS AND SPECIAL TOOLS LIST/  
ILLUSTRATED PARTS BREAKDOWN  
(INCLUDING DEPOT MAINTENANCE REPAIR PARTS AND SPECIAL TOOLS)

FOR

ENHANCED REMOTED TARGET SYSTEM (ERETS)  
TARGET HOLDING MECHANISM, TANK GUNNERY  
(NSN 6920-01-235-1758)  
(PN 9375764)  
(NSN 6920-01-085-8514)  
(PN 11784501)



DISTRIBUTION STATEMENT A - Approved for public release; distribution is unlimited.

**TECHNICAL MANUAL  
UNIT, DIRECT SUPPORT, AND GENERAL SUPPORT MAINTENANCE  
REPAIR PARTS AND SPECIAL TOOLS LIST/  
ILLUSTRATED PARTS BREAKDOWN  
(INCLUDING DEPOT MAINTENANCE REPAIR PARTS AND SPECIAL TOOLS)**

**FOR**

**ENHANCED REMOTED TARGET SYSTEM (ERETS)  
TARGET HOLDING MECHANISM,  
TANK GUNNERY  
(NSN 6920-01-235-1758)  
(PN 9375764)  
(NSN 6920-01-085-8514)  
(PN 11784501)**

**REPORTING OF ERRORS AND RECOMMENDING IMPROVEMENTS**

You can help improve this manual. If you find any mistakes or if you know of a way to improve the procedures, please let us know. Mail your letter, DA Form 2028 (Recommended Changes to Publications and Blank Forms), or DA Form 2028-2 located in the back of this manual direct to: Director, Armament and Chemical Acquisition and Logistics Activity, ATTN: AMSTA-AC-NML, Rock Island, IL 61299- 7630.

**DISTRIBUTION STATEMENT A - Approved for public release; distribution is unlimited.**

**HEADQUARTERS, DEPARTMENT OF THE ARMY**

**TABLE OF CONTENTS**

	<b>Page</b>	<b>Illus/ Figure</b>
<b>SECTION I</b>		
<b>SECTION II</b>		
<b>GROUP 00</b>		
<b>INTRODUCTION</b> .....	1	
<b>REPAIR PARTS LIST</b> .....	1-1	1
<b>TARGET HOLDING MECHANISM, TANK GUNNERY (9375764 and 11784501)</b> .....	1-1	1

\*This manual supersedes TM 9-6920-442-14&P, dated 29 December 1987, including all changes.

TABLE OF CONTENTS - Continued

	Page	Illus/ Figure
<b>SECTION II</b>		
<b>REPAIR PARTS LIST - Continued</b>		
GROUP 01		
TANK TARGET ASSEMBLY (11784502-1 and 11784502-2).....	2-1	2
0101 TARGET FRAME, SINGLE (11784508) .....	3-1	3
0102 CABLE ASSEMBLY (11784509).....	4-1	4
0103 CABLE ASSEMBLY, POWER (11784510) .....	5-1	5
0104 CONTROL ASSEMBLY (11784504).....	6-1	6
0105 HYDRAULIC CYLINDER (11784619-1).....	7-1	7
0106 HYDRAULIC UNIT ASSEMBLY (9375758) .....	8-1	8
0109 CABLE ASSEMBLY (11784508).....	9-1	9
GROUP 03		
LAMP ASSEMBLY (11784475).....	10-1	10
0301 CABLE ASSEMBLY, SPECIAL (11784476).....	11-1	11
GROUP 04		
BATTERY BOX ASSEMBLY (12950811) .....	12-1	12
GROUP 06		
BATTERY ELIMINATOR (9356185) .....	13-1	13
0601 POWER SUPPLY (12934455) .....	14-1	14
GROUP 07		
RECEIVER, CHANNEL (11784801) .....	15-1	15
GROUP 08		
TRANSMITTER, RADIO (11784700) .....	16-1	16
0802 TRANSMITTER (11784701) .....	17-1	17
GROUP 99		
BULK .....	BULK-1	
<b>SECTION III</b>		
<b>SPECIAL TOOLS UST (Not applicable)</b> .....	I-1	
<b>SECTION IV</b>		
<b>CROSS-REFERENCE INDEXES</b> .....	I-1	
NATIONAL STOCK NUMBER INDEX .....	I-1	
PART NUMBER INDEX .....	I-4	

**UNIT, DIRECT SUPPORT, AND GENERAL SUPPORT MAINTENANCE  
REPAIR PARTS AND SPECIAL TOOLS LIST/  
ILLUSTRATED PARTS BREAKDOWN  
(INCLUDING DEPOT MAINTENANCE REPAIR PARTS AND SPECIAL TOOLS)**

**SECTION I. INTRODUCTION**

**1 SCOPE.**

This RPSTL/IPB lists and authorizes spares and repair parts, special tools, special test, measurement, and diagnostic equipment (TMDE), and other special support equipment required for performance of unit maintenance, direct support, and general support maintenance of the Target Holding Mechanism, Tank Gunnery (THM/TG). It authorizes the requisitioning, issue, and disposition of spares, repair parts, and special tools as indicated by the source, maintenance, and recoverability (SMR) codes.

**2 GENERAL.**

In addition to Section I, Introduction, this repair parts and special tools list/illustrated parts breakdown is divided into the following sections.

**a. SECTION II - Repair Parts List.** A list of spares and repair parts authorized by this RPSTL/IPB for use in the performance of maintenance. This list also includes parts which must be removed for replacement of the authorized parts. Parts lists are composed of functional groups in ascending alphanumeric sequence, with the parts in each group listed in ascending figure and item number sequence. Bulk materials are listed by item name in fig. Bulk at the end of the section. Repair parts kits are listed separately in their own functional group within section II. Repair parts for the repairable special tools are also listed in this section.

**b. SECTION III - Special Tools List.** A list of special tools, special TMDE, and other special support equipment authorized by this RPSTL/IPB (as indicated by Basis of Issue (BOI) information in DESCRIPTION AND USABLE ON CODE (UOC) column) for the performance of maintenance.

**c. SECTION IV - Cross-Reference Indexes.** A list, in national item identification number (NIIN) sequence, of all national stock number items appearing in the listings, followed by a list in alphanumeric sequence of all part numbers appearing in the list. National stock numbers and part numbers are cross-referenced to each illustration figure and item number appearance. This figure and item number index lists figure and item numbers in alphanumeric sequence and cross-references national stock numbers (NSN), commercial and government entity codes (CAGEC), and part numbers.

**3 EXPLANATION OF COLUMNS (SECTIONS II AND III).**

**a. ITEM NO. (Column (1)).** Indicates the number used to identify items called out in the illustration.

**b. SMR CODE (Column (2)).** The source, maintenance, and recoverability (SMR) code containing supply/requisitioning information, maintenance level authorization criteria, and disposition instruction, as shown in the following breakout:

Source Code	Maintenance Code	Recoverability Code
<u>XX</u> 1st two positions	<u>XX</u>	<u>XX</u> 5th position
How you get an item	3d Position  Who can install replace or use the item.	4th position  Who can do complete repair* on the item.
		Who determines disposition action on an unserviceable item.

\*Complete Repair: Maintenance, capacity, and authority tct perform all corrective maintenance tasks of the Repair function in a use/user environment in order to restore serviceability to a failed item.

**(1) Source Code.** The source code tells you how you get an item needed for maintenance, repair, or overhaul of an end item/equipment Explanations of source codes follow:

**Code:** PA

**Definition:** Item procured and stocked for anticipated or known usage.

**Code:** PB

**Definition:** Item procured and stocked for insurance purposes because essentiality dictates that a minimum quantity be available in the supply systems.

**Code:** PC

**Definition:** Item procured and stocked and which otherwise would be coded PA except that it is deteriorative in nature.

**Code:** PD

**Definition:** Support item, excluding support equipment procured for initial issue or outfitting and stocked only for subsequent or additional initial issues or outfittings. Not subject to automatic replenishment.

**Code:** PE

**Definition:** Support equipment procured and stocked for initial issue or outfitting to specified maintenance repair activities.

**Code:** PF

**Definition:** Support equipment which will not be stocked but which will be centrally procured on demand.

**Code:** PG

**Definition:** Item procured and stocked to provide for sustained support for the life of the equipment. It is applied to an item peculiar to the equipment which, because of probable discontinuance or shutdown of production facilities, would prove uneconomical to reproduce at a later time.

**Code:** KD

**Definition:** An item of a depot overhaul/repair kit and not purchased separately. Depot kit defined as a kit that provides items required at the time of overhaul or repair.

**Code:** KF

**Definition:** An item of a maintenance kit and not purchased separately. Maintenance kit defined as a kit that provides an item that can be replaced at unit or intermediate levels of maintenance.

**Code:** KB

**Definition:** Item included in both a depot overhaul/repair kit and a maintenance kit.

**Code:** MO

**Definition:** Item to be manufactured or fabricated at unit level.

**Code:** MF

**Definition:** Item to be manufactured or fabricated at intermediate maintenance levels (Air Force—intermediate\*; Marine Corps-3rd echelon; Army-direct support\*; Navy--afloat).

**Code:** MH

**Definition:** Item to be manufactured or fabricated at intermediate maintenance levels (Air Force--intermediate\*; Marine Corps--4th echelon; Army-general support\*; Navy--ashore).

**Code:** MG

**Definition:** Item to be manufactured or fabricated at both afloat and ashore intermediate maintenance levels (Navy use only).

**Code:** MD

**Definition:** Item to be manufactured or fabricated at depot maintenance level.

**Code:** AO

**Definition:** Item to be assembled at unit level.

**Code:** AF

**Definition:** Item to be assembled at intermediate maintenance levels (Air Force--intermediate\*; Marine Corps--3rd echelon; Army--direct support\*; Navy--afloat).

**Code:** AH

**Definition:** Item to be assembled at intermediate maintenance levels (Air Force--intermediate\*; Marine Corps--4th echelon; Army--general support\*; Navy--ashore).

**Code:** AG

**Definition:** Item to be assembled at both afloat and ashore intermediate maintenance levels (Navy use only).

**Code:** AD

**Definition:** Item to be assembled at depot maintenance levels.

**Code:** XA\*\*

**Definition:** Item is not procured or stocked because the requirements for the item will result in replacement of the next higher assembly.

**Code:** XB

**Definition:** Item is not procured or stocked. If not available through salvage, requisition.

**Code:** XC\*\*

**Definition:** Installation drawing, diagram, instruction sheet, field service drawing that is identified by manufacturers' part number.

**Code:** XD

**Definition:** A low mortality support item that is not stocked. When required, items will be requested through normal supply channels.

**NOTE**

**\*For USAF and the USA Safeguard Program, only code F will be used to denote intermediate maintenance. On joint programs, use of either code F or H by the joining service will denote intermediate maintenance to USAF and the USA Safeguard Program.**

**\*\*Cannibalization or controlled exchange, when authorized, may be used as a source of supply for items with the above source codes except for those source coded XA or those aircraft support items restricted by requirements of AR 700-42.**

**(2) Maintenance Code.** Maintenance codes tell you the level(s) of maintenance authorized to use and repair support items.

**(a)** The maintenance code entered in the third position tells you the lowest maintenance level authorized to remove, replace, and use an item. The maintenance code entered in the third position will indicate authorization to the following levels of maintenance:

**CODE: O**

**Application/explanation:** Support item is removed, replaced, used at the unit level of maintenance. (To distinguish between the unit maintenance capabilities on different classes of ships, the following codes may be used intra-Navy only. On joint programs, Navy will receive and transmit an O to indicate unit maintenance level.

- 2--Minesweeper, Yardcraft, Patrol Boat
- 3--Submarines
- 4--Auxiliary/Amphibious Ships
- 5--Major Combatant (Destroyer, Frigate)
- 6--Major Combatant (Cruiser, Carrier)

On Army programs, a code C may be used in the third position to denote crew or operator maintenance performed within unit maintenance. On joint programs the Army will receive or transmit an O to indicate unit level.)

**Code: F**

**Application/explanation:** Support item is removed, replaced, used at the following intermediate levels:

- USAF--Intermediate\*
- USA--Direct Support\*
- USN--Afloat
- USMC--Third Echelon

**Code: G**

**Application/explanation:** Support item is removed, replaced, used at both afloat and ashore intermediate levels:  
Navy only

**Code: H**

**Application/explanation:** Support item is removed, replaced, used at the following intermediate levels:  
 USAF--Intermediate\*  
 USA--General Support\*  
 USN--Ashore (only)  
 USMC--Fourth Echelon

**NOTE**

**\*For USAF programs and the USA Safeguard Program, code F will be used to denote intermediate maintenance. On joint programs, use of either code F or H by the joining service will denote intermediate maintenance to USAF and the USA Safeguard Program.**

**Code: D**

**Application/explanation:** Support items that are removed, replaced, used at depot only:  
 USAF--Depot, Mobile Depot, Specialized Repair Activity  
 USA--Depot, Mobile Depot, Specialized Repair Activity  
 USN--Aviation Rework, Avionics and Ordnance Facilities, Shipyards  
 USMC--Depot

**(b)** The maintenance code entered in the fourth position tells you whether or not the item is to be repaired and identifies the lowest maintenance with the capability to do complete repair (perform all authorized repair functions). The decision to code the support item for repair at the indicated maintenance levels requires that all maintenance capability (remove, replace, repair, assemble, and test) for the support items be provided to that level. This does not preclude some repair which may be accomplished at a lower level of maintenance. However, because of service differences in communicating maintenance repair level information, a maintenance code entry in this position is not required by all services. When a maintenance code is not used, a dash (-) sign will be entered. For multi-service equipment/systems or when a code is entered, this position will contain one of the following maintenance codes as assigned by the service(s) that requires the code:

**Code: O**

**Application/explanation:** The lowest maintenance level capable of complete repair of the support item is the unit level. (To distinguish between the unit maintenance capabilities on different classes of ships, the following codes will be used intra-Navy only. On joint programs, Navy will receive and transmit an o to indicate unit maintenance level.

- 2--Minesweeper, Yardcraft, Patrol Boat
- 3--Submarines
- 4--Auxiliary/Amphibious Ships
- 5--Major Combatant (Destroyer, Frigate)
- 6--Major Combatant (Cruiser, Carrier)

**Code: F**

**Application/explanation:** The lowest maintenance level capable of complete repair of the support item is the following intermediate level:  
 USAF--Intermediate\*  
 USA--Direct Support\*  
 USN--Afloat  
 USMC--Third Echelon



**Code: H**

**Application/explanation:** The lowest maintenance level capable of complete repair of the support item is the following intermediate level:

USAF--Intermediate\*  
 USA--General Support\*  
 USN--Ashore (only)  
 USMC--Fourth Echelon

**NOTE**

**\*For USAF programs and the USA Safeguard Program, Code F will be used to denote intermediate maintenance. On joint programs, use of either code F or H by the joining service will denote intermediate maintenance to USAF and the USA Safeguard Program.**

**Code: G**

**Application/explanation:** Both afloat and ashore intermediate levels are capable of complete repair of support item:  
 NAVY ONLY

**Code: D**

**Application/explanation:** The lowest maintenance level capable of complete repair of the support item is the depot level:

USAF--Depot, Mobile Depot, Specialized Repair Activity  
 USA--Depot, Mobile Depot, Specialized Repair Activity  
 USN--Aviation Rework, Avionics and Ordnance Facilities, Shipyards  
 USMC--Depot

**Code: L**

**Application/explanation:** Repair restricted to designated specialized repair activity.

**Code: Z**

**Application/explanation:** Nonrepairable; no repair is authorized.

**Code: B**

**Application/explanation:** No repair is authorized. The item may be reconditioned by adjusting, lubricating, etc, at the user level. No parts or special tools are procured for the maintenance of this item.

**(3) Recoverability Code.** Recoverability codes are assigned to items to indicate the disposition action on unserviceable items. The recoverability code is shown in the fifth position of the SMR code as follows:

**Recoverability Code: Z**

**Definition:** Nonrepairable item. When unserviceable, condemn and dispose at the level indicated in position 3.

**Recoverability Code: O**

**Definition:** Repairable item. When uneconomically repairable, condemn and dispose at unit level.

**Recoverability Code: F**

**Definition:** Repairable item. When uneconomically repairable, condemn and dispose at the following intermediate levels:

- USAF--Intermediate\*
- USA--Direct Support\*
- USN--Afloat
- USMC--Third Echelon

**Recoverability Code: H**

**Definition:** Repairable item. When uneconomically repairable, condemn and dispose at the following levels:

- USAF--Intermediate\*
- USA--General Support\*
- USN--Ashore (only)
- USMC--Fourth Echelon

**NOTE**

**\*For USAF programs and the USA Safeguard Program, code F will be used to denote intermediate level. On joint programs, use of either code F or H by the joining service will denote intermediate level to USAF and the USA Safeguard Program.**

**Recoverability Code: D**

**Definition:** Repairable item. When beyond lower level repair capability, return to depot. Condemnation and disposal not authorized below depot level.

**Recoverability Code: L**

**Definition:** Repairable item. Repair, condemnation, and disposal not authorized below depot/specialized repair activity level.

**Recoverability Code: A**

**Definition:** Item requires special handling or condemnation procedures because of specific reasons (ie, precious metal content, high dollar value, critical material or hazardous material). Refer to appropriate manuals/directives for specific instructions.

**(4) Reserved for Service Option.** The sixth position of the SMR code is reserved for internal management purposes of each service.

**c. CAGEC (Column (3)).** The commercial and Government entity code (CAGEC) is a 5-digit code which is used to identify the manufacturer, distributor, or government agency/activity that supplies the item.

**d. PART NUMBER (Column (4)).** Indicates the primary number used by the manufacturer (individual, company, firm, corporation, or government activity) which controls the design and characteristics of the item by means of its engineering drawings, specifications, standards, and inspection requirements to identify an item or range of items.

**NOTE**

**When you use an NSN to requisition an item, the item you receive may have a different part number from the part you ordered.**

**e. DESCRIPTION AND USABLE ON CODE (UOC) (Column (5)).** This column includes the following information:

- (1) The federal item name and, when required, a minimum description to identify the item.
- (2) Part numbers of bulk materials are referenced in this column in the line entry to be manufactured/fabricated.
- (3) The statement END OF FIGURE appears just below the last item description in column (5) for a given figure in both Sections II and III.

f. QTY (Column (6)). The QTY (quantity per figure column) indicates the quantity of the item used in the breakout shown on the illustration/figure which is prepared for a functional group, subfunctional group, or an assembly. A V appearing in this column in lieu of a quantity indicates that the quantity is variable and the quantity may vary from application to application.

**4 EXPLANATION OF COLUMNS (SECTION IV).**

**a. National Stock Number (NSN) Index.**

(1) STOCK NUMBER Column. This column lists the NSN in national item number (NIIN) sequence. The NIIN consists of the last nine digits of the NSN.

NSN
(e.g., 5385-01-574-1476)
NIIN

When using this column to locate an item, ignore the first four digits of the NSN. However, the complete NSN should be used when ordering items by stock number.

(2) FIG. Column. This column lists the number of the figure where the item is identified/located. The figures are in numerical order in Section II and Section III.

(3) ITEM Column. The item number identifies the item associated with the figure listed in the adjacent FIG. Column. This item is also identified by the NSN listed on the same line.

**b. PART NUMBER INDEX.** Part numbers in this index are listed by part number in ascending alphanumeric sequence (vertical arrangement of letter and number combinations which places the first letter or digit of each group in order A through Z, followed by the numbers 0 through 9 and each following letter or digit in like order).

(1) CAGEC Column. The commercial and Government entity code is a 5-digit numeric code used to identify the manufacturer, distributor, or Government activity that supplies the item.

(2) PART NUMBER Column. Indicates the primary number used by the manufacturer (individual, firm, corporation, or Government activity) which controls the design and characteristics of the item by means of its engineering drawings, specifications, standards, and inspection requirements to identify an item or range of items.

(3) STOCK NUMBER Column. This column lists the NSN for the associated part number and manufacturer identified in the PART NUMBER and CAGEC columns to the left.

(4) FIG. Column. This column lists the number of the figure where the item is identified/located in Sections II and III.

(5) ITEM Column. The item number is the number assigned to the item as it appears in the figure referenced in the adjacent figure number column.

c. FIGURE AND ITEM NUMBER INDEX. This index lists the figures in the order in which they appear in Section II.

(1) FIG. Column. This column lists the number of the figure where the item is identified/located in Sections II and III.

(2) ITEM Column. The item number is that number assigned to the item as it appears in the figure referenced in the adjacent figure number column.

(3) STOCK NUMBER Column. This column list the NSN for the item.

(4) CAGEC Column. The commercial and Government entity code (CAGEC) is a 5-digit code used to identify the manufacturer, distributor, or Government activity that supplies the item.

(5) PART NUMBER Column. Indicates the primary number used by the manufacturer (individual, firm, corporation, or Government activity), which controls the design and characteristics of the item by means of its engineering drawings, specifications, standards, and inspection requirements to identify an item or range of items.

**5 SPECIAL INFORMATION.**

a. Fabrication Instructions. Not applicable.

b. Index Numbers. Not applicable.

c. Associated Publications. The publication listed below pertains to the Target Holding Mechanism, Tank Gunnery:

<b>Publication</b>	<b>Short Title</b>
TM9-6920-742-14-5	THM/TG maintenance manual

d. Illustrations Listing. Not applicable.

e. Usable on Code. The usable on code appears in the lower left corner of the description column heading. Usable on codes are shown as UOC: in the description column on the first line after the applicable item description/nomenclature. Uncoded items are applicable to all models. Identification of usable on code used in the RPSTL/IPB are:

<b>CODE</b>	<b>USED ON</b>
AL5	THM/TG, Radio Controlled
AL6	THM/TG, Computer Controlled

**6 HOW TO LOCATE REPAIR PARTS.**

a. When National Stock Numbers or Part Numbers Are Not Known.

(1) First. Using the table of contents, determine the assembly group to which the items belong. This is necessary since figures are prepared for assembly groups and subassembly groups, and listings are divided into the same groups.

(2) Second. Find the figure covering the functional group or the subfunctional group to which the items belong.

- (3) Third. Identify the items on the figure and note the number(s).
- (4) Fourth. Refer to the repair parts list for the figure to find the part number(s) noted on the figure.
- (5) Fifth. Refer to the figure and item number index to find the NSN, if assigned.

**b. When National Stock Number or Part Number is Known.**

(1) First. Using the national stock number or the part number index, find the pertinent nsn or part number. The NSN index is arranged in NIIN sequence. Both indexes cross-reference you to the illustration/figure and item number of the part you are looking for.

(2) Second. Turn to the figure and item number, verify that the item is the one you are looking for and locate the item number in the repair parts list

**7 ABBREVIATIONS.**

Not applicable.

SECTION II. REPAIR PARTS LIST

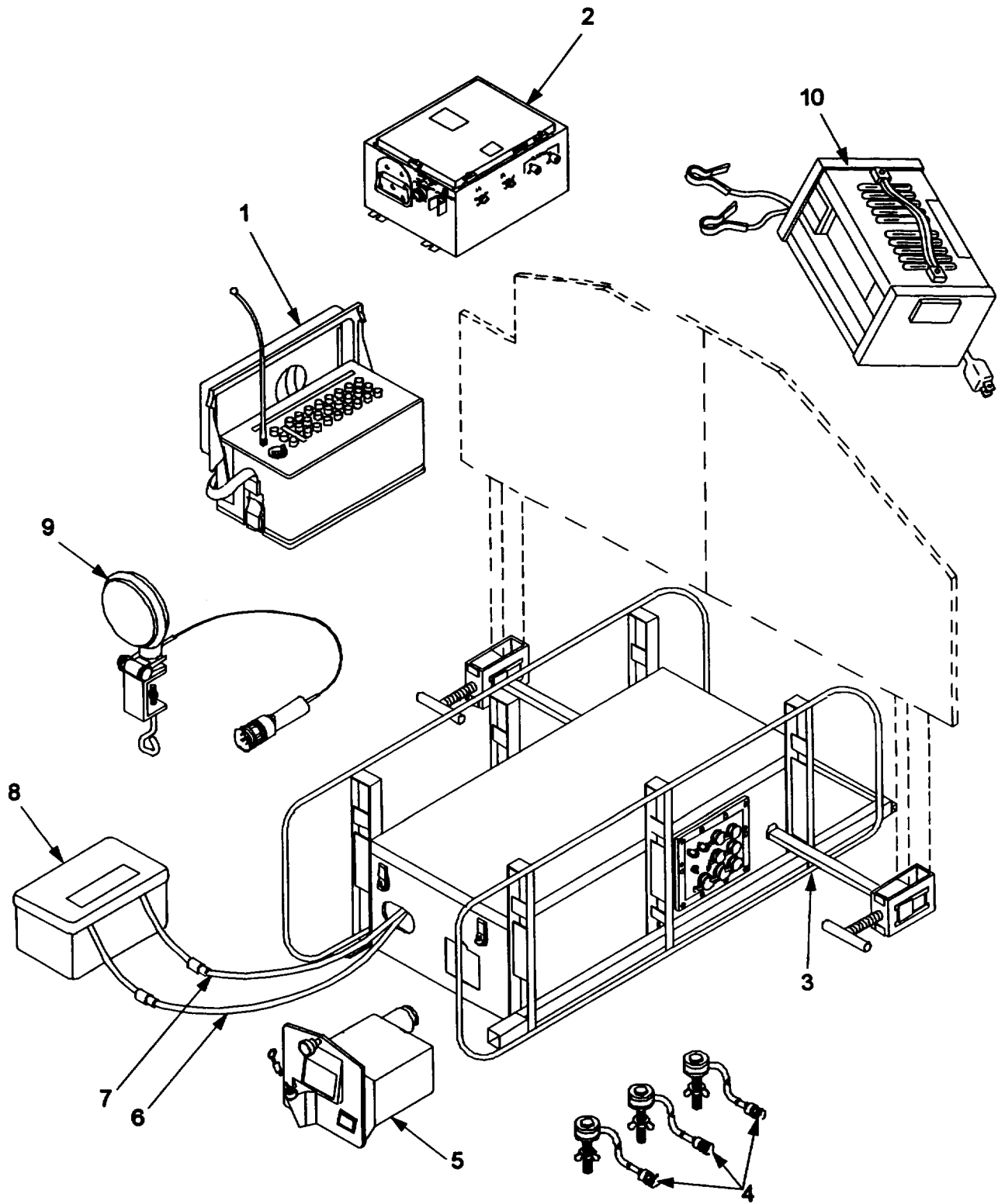


Figure 1. Target Holding Mechanism, Tank Gunnery 9375764 and 11784501

SECTION II

TM 9-6920-742-24P-5

(1) ITEM NO.	(2) SMR CODE	(3) NSN	(4) CAGEC	(5) PART NUMBER	(6) DESCRIPTION AND USABLE ON CODE (UOC)	(7) QTY
GROUP 00 FIG. 1 TARGET HOLDING MECH, TANK GUNNERY 9375764 AND 11784501						
01	PFOOO	5820010909304	19200	11784700	TRANSMITTER, RADIO SEE FIG. 16 FOR ..... BREAKDOWN UOC: AL5.....	1
02	AOOOO		19200	9356185	BATTERY ELIMINATOR SEE FIG 13 FOR..... BREAKDOWN UOC: AL6.....	1
03	XDOFF		19200	11784502-2	TANK TARGET ASSEMBLY SEE FIG 2 FOR..... BREAKDOWN UOC AL6.....	1
03	XDOFF		19200	11784502-1	TARGET HOLDING MECH SEE FIG 2 FOR..... BREAKDOWN UOC: AL5.....	1
04	PAOZZ	6920013507760	19200	12599363	SENSOR, HIT INDICATOR.....	3
05	PAOFF	5895013941714	19200	12974102	RECEIVER, SUBASSEMBLY SEE FIG 15..... FOR BREAKDOWN UOC: AL5 .....	1
06	PAOZZ	6145012396988	19200	9375734	CABLE, POWER, ELECTRICAL .....	1
07	PAOZZ	6150012389872	19200	9375737	CABLE ASSEMBLY, POWER.....	1
08	XDOOO		19200	12950811	BATTERY BOX ASSEMBLY SEE FIG 12 .....	1
09	PAOOO	6240011951750	19200	11784475	FOR BREAKDOWN .....	
					LAMP ASSEMBLY SEE FIG 10 FOR..... BREAKDOWN.....	1
10	PBOZZ	6130012367454	19200	11784485	CHARGER, BATTERY .....	1

END OF FIGURE

SECTION II.

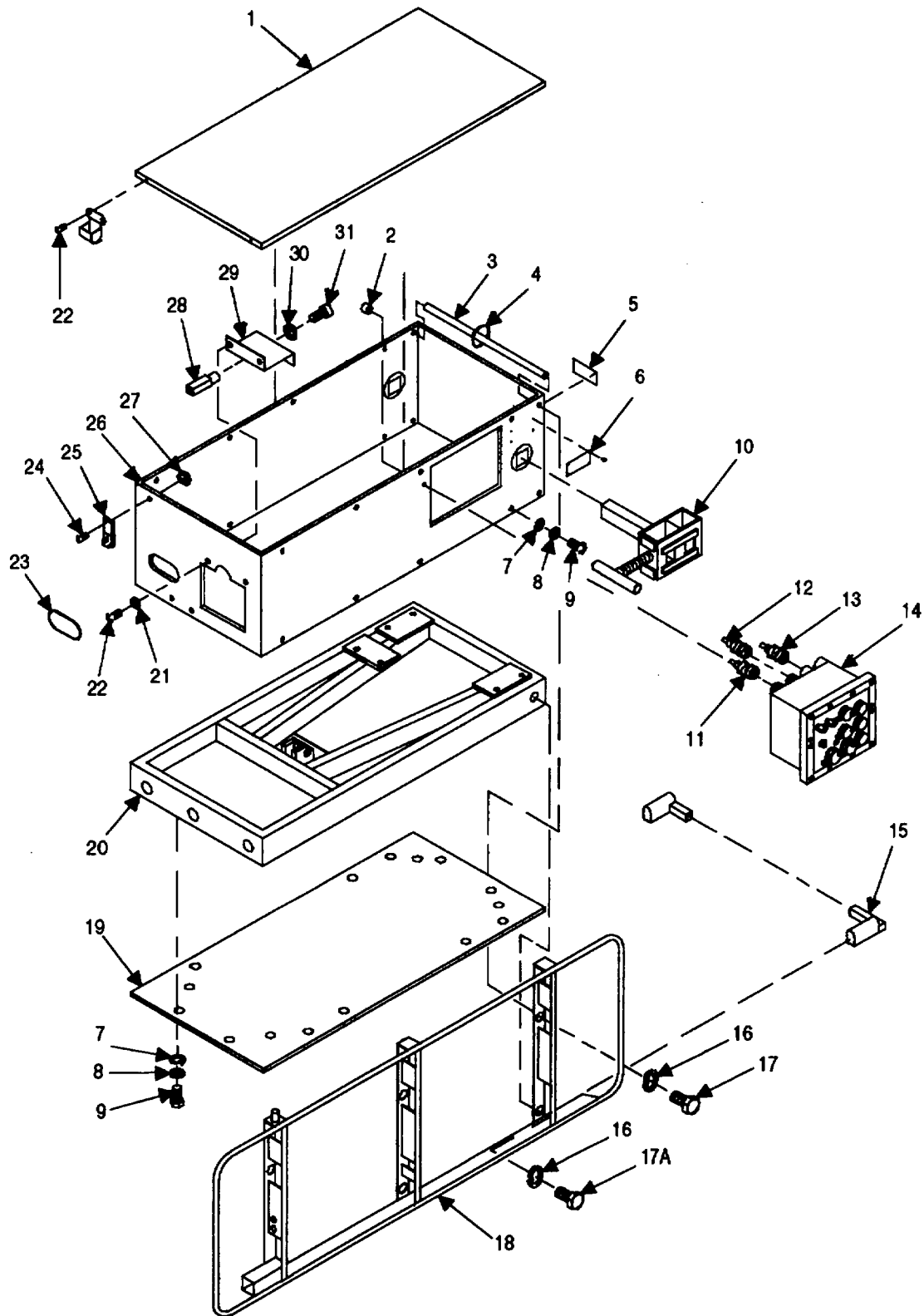


Figure 2. Tank Target Assembly 11784502-1 and 11784502-2 (Sheet 1 of 2)



SECTION II.

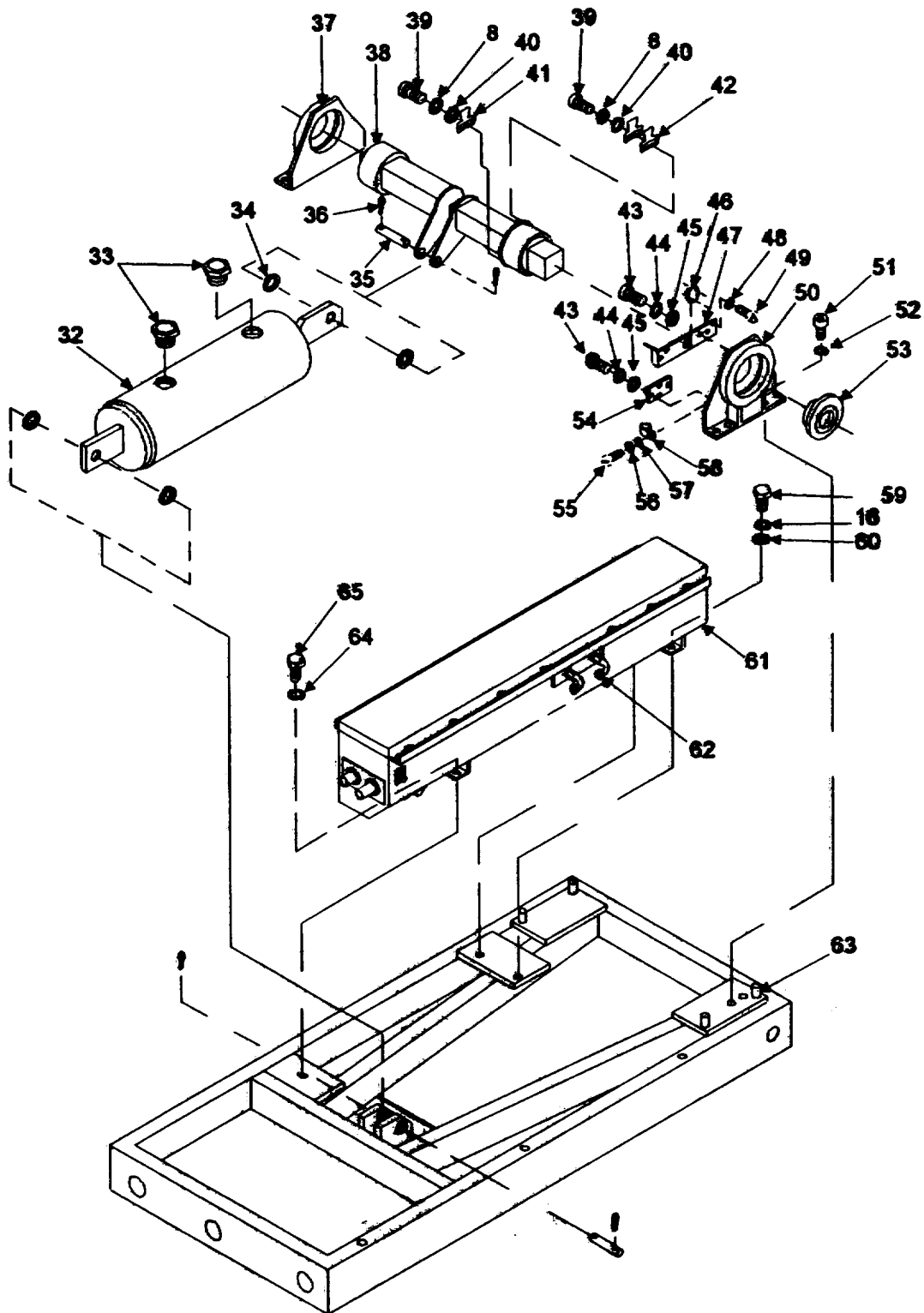


Figure 2. Tank Target Assembly 11784502-1 and 11784502-2 (Sheet 2 of 2)

## SECTION II

TM 9-6920-742-24P-5

(1) ITEM NO.	(2) SMR CODE	(3) NSN	(4) CAGEC	(5) PART NUMBER	(6) DESCRIPTION AND USABLE ON CODE (UOC)	(7) QTY
GROUP 01 FIG. 2 TANK TARGET ASSEMBLY 11784602-1 AND 11784502-2						
01	PAFZZ	5340012389879	19200	11784606	DOOR, ACCESS.....	1
02	PAFZZ	5340012410430	19200	9375759	RETAINER, NUT AND BOLT .....	2
03	PAFZZ	6920012350244	19200	11784608	BAR, CROSS .....	2
04	PAFZZ	5975000742072	96906	MS3367-1-9	STRAP, TIEDOWN, ELECTRICAL.....	2
05	XDFZZ		19200	11784539	PLATE, IDENTIFICATION.....	1
06	XDFZZ		19200	11784538	PLATE, IDENTIFICATION.....	1
07	PAFZZ	5310000145850	96906	MS27183-42	WASHER, FLAT.....	23
08	PAFZZ	5310000453296	96906	MS35338-43	WASHER, LOCK.....	26
09	PAFZZ	5305009906444	96906	MS35207-261	SCREW, MACHINE .....	23
10	AOOOO		19200	11784506	TARGET FRAME, SINGLE SEE FIG. 3 FOR .....	2
BREAKDOWN .....						
11	PAOFF	5995012350235	19200	11784508	CABLE ASSEMBLY, (RECEIVER) SEE.....	1
FIG. 9 FOR BREAKDOWN UOC: AL5 .....						1
12	PAOFF	5995012350236	19200	11784509	CABLE ASSEMBLY, HYD SEE FIG. 4 FOR .....	1
BREAKDOWN.....						
13	PAFFF	6150012391547	19200	11784510	CABLE ASSEMBLY, POWER SEE FIG 5.....	1
FOR BREAKDOWN .....						
14	PAOFF	6920012037820	19200	11784504	CONTROL ASSEMBLY SEE FIG 6 FOR .....	1
BREAKDOWN.....						
15	PAFZZ	6920012350238	19200	11784605	STABILIZER, TARGET .....	1
16	PAFZZ	5310004079566	96906	MS35338-45	WASHER, LOCK.....	14
17	PAFZZ	5306010562942	96906	MS90725-35	BOLT, MACHINE .....	6
17A	PAFZZ	5306010758519	96906	MS90725-36	BOLT, MACHINE .....	6
18	PAFZZ	6920012350237	19200	11784607	FRAME, PROTECTION .....	2
19	XDFZZ		19200	11784626	PLATE, BASE .....	1
20	PBFZZ	6105013753690	19200	11784627	BASE PUMP .....	1
21	PAFZZ	5310000453299	96906	MS35338-42	WASHER, LOCK.....	2
22	PAFZZ	5305009846189	96906	MS35206-241	SCREW, MACHINE .....	10
23	PAFZZ	9390012388184	19200	9375736	NONMETALLIC CHANNEL .....	1
24	PAFZZ	5305009846193	96906	MS35206-245	SCREW, MACHINE .....	8
25	PAOZZ	5340011827616	19200	11784545	CATCH, CLAMPING .....	4
26	PAFZZ	6920012350234	19200	11784611	COVER, SIDE .....	1
27	PAFZZ	5310008113494	96906	MS21044N08	NUT, SELF-LOCKING, HEXAGON .....	8
28	PAFZZ	5310012350245	19200	11784548	NUT.....	1
29	PAFZZ	5340012350233	19200	9375761	BRACKET, MOUNTING .....	1
30	PAFZZ	5310008238804	96906	MS27183-9	WASHER, FLAT.....	2
31	PAFZZ	5305012389876	19200	11784572-2	SCREW, MACHINE .....	1
32	PAFFF	3040012351760	19200	11784619-1	CYLINDER, HYDRAULIC SEE FIG. 7 FOR .....	1
BREAKDOWN.....						
33	PAFZZ	4730002895484	96906	MS51500A4-4	ADAPTER, STRAIGHT, PIPE .....	2
34	PAFZZ	5310012101588	19200	11784618	WASHER, FLAT.....	4
35	PAFZZ	6920011951749	19920	11784617	JOURNAL .....	2
36	PAFZZ	5315000120123	96906	MS24665-355	PIN, COTTER .....	4
37	PAFZZ	3130012350295	19200	11784521	HOUSING, BEARING UNIT .....	1
38	XDFZZ		19200	11784621	SHAFT, STRAIGHT .....	1
39	PAFZZ	5305009837428	96906	MS16998-26	SCREW, CAP, SOCKET HEAD .....	3
40	PAFZZ	5310008098546	96906	MS27183-8	WASHER, FLAT.....	3

## SECTION II

TM 9-6920-742-24P-5

(1) ITEM NO.	(2) SMR CODE	(3) NSN	(4) CAGEC	(5) PART NUMBER	(6) DESCRIPTION AND USABLE ON CODE (UOC)	(7) QTY
41	PAFZZ	6920012350246	19200	11784622	ACTUATOR, LIMIT .....	1
42	PAFZZ	6920012350247	19200	11784623	ACTUATOR, LIMIT .....	2
43	PAFZZ	5305009881726	96906	MS35206-282	SCREW, MACHINE .....	4
44	PAFZZ	5310005501130	96906	MS35333-40	WASHER, LOCK.....	4
45	PAFZZ	5310008094058	96906	MS27183-10	WASHER, FLAT.....	4
46	PAFZZ	5975007275153	96906	MS3367-4-9	STRAP, TIEDOWN, ELECTRICAL.....	1
47	PAFZZ	5340012350248	19200	11784625	PLATE, MOUNTING.....	1
48	PAFZZ	5310005432410	96906	MS35338-40	WASHER, LOCK.....	6
49	PAFZZ	5305001636561	96906	MS51861-14C	SCREW, TAPPING THREAD.....	6
50	PAFZZ	3130012350296	19200	11784522	HOUSING, BEARING UNIT .....	1
51	PAFZZ	5305009789395	96906	MS16997-100	SCREW, CAP, SOCKET HEAD .....	4
52	PAFZZ	5310006379541	96906	MS35338-46	WASHER, LOCK.....	4
53	PAFZZ	5330012389871	19200	11784613	SEAL, NONMETALLIC ROUND.....	2
54	PAFZZ	5340012350249	19200	11784624	PLATE, MOUNTING.....	1
55	PAFZZ	5305009844988	96906	MS35206-228	SCREW, MACHINE .....	1
56	PAFZZ	5310005790079	96906	MS35333-37	WASHER, LOCK.....	1
57	PAFZZ	5310013034701	96906	MS51412-1	WASHER, FLAT.....	1
58	PAFZZ	5340010548824	19200	11784669-2	CLAMP, LOOP.....	1
59	PAFZZ	5306002264825	80204	B1821BH031C075N	BOLT, MACHINE .....	2
60	PAFZZ	5310000814219	96906	MS27183-12	WASHER, FLAT.....	2
61	PAFFF	6920012391548	19200	9375758	HYDRAULIC UNIT ASSEMBLY SEE FIG 8 .....	1
					FOR BREAKDOWN .....	
62	PAOZZ	4720012351768	19200	9375747	HOSE ASSEMBLY, NONMETALLIC.....	2
63	PAFZZ	5315005317881	96906	MS39086-251	PIN, SPRING .....	4
64	PAFZZ	5310005825965	96906	MS35338-44	WASHER, LOCK.....	1
65	PAFZZ	5305000680502	96906	MS90725-6	SCREW, CAP, HEXAGON HEAD.....	1

END OF FIGURE

SECTION II.

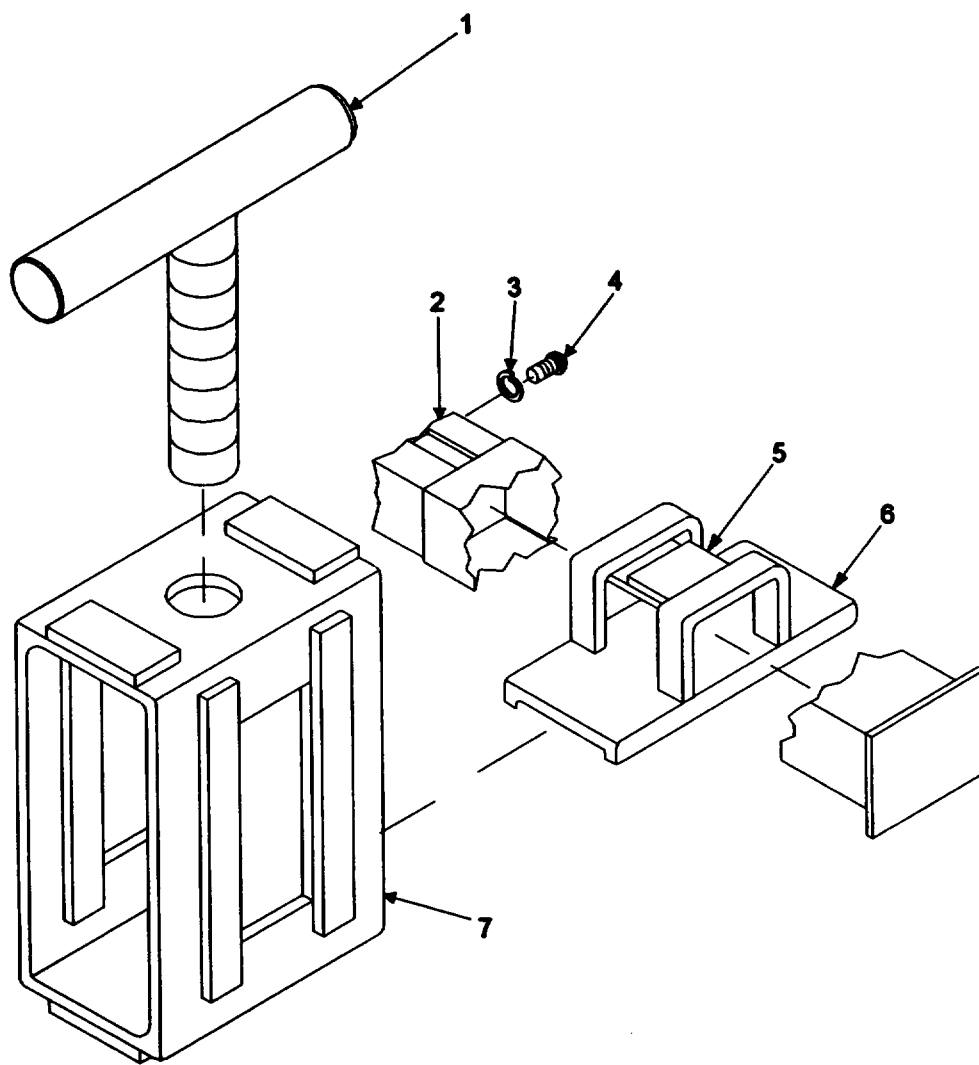


Figure 3. Target Frame, Single 11784506

**SECTION II**

**TM 9-6920-742-24P-5**

(1) ITEM NO.	(2) SMR CODE	(3) NSN	(4) CAGEC	(5) PART NUMBER	(6) DESCRIPTION AND USABLE ON CODE (UOC)	(7) QTY
GROUP 0101 FIG. 3 TARGET FRAME, SINGLE						
11784506						
01	PAOZZ	5305012389870	19200	11784554	SCREW, CLAMP .....	1
02	PAOZZ	3040012350242	19200	11784550	SHAFT, EXTENSION .....	1
03	PAOZZ	5310000453296	96906	MS35358-43	WASHER, LOCK.....	1
04	PAOZZ	5305000889044	96906	MS35207-260	SCREW, MACHINE .....	1
05	PAOZZ	6920012350241	19200	11784553	PAD, CLAMP .....	1
06	PAOZZ	6920012350240	19200	11784552	RETAINER, PAD.....	1
07	PAOZZ	5340013963952	19200	11784551	HOLDER, CLAMP .....	1

END OF FIGURE

SECTION II.

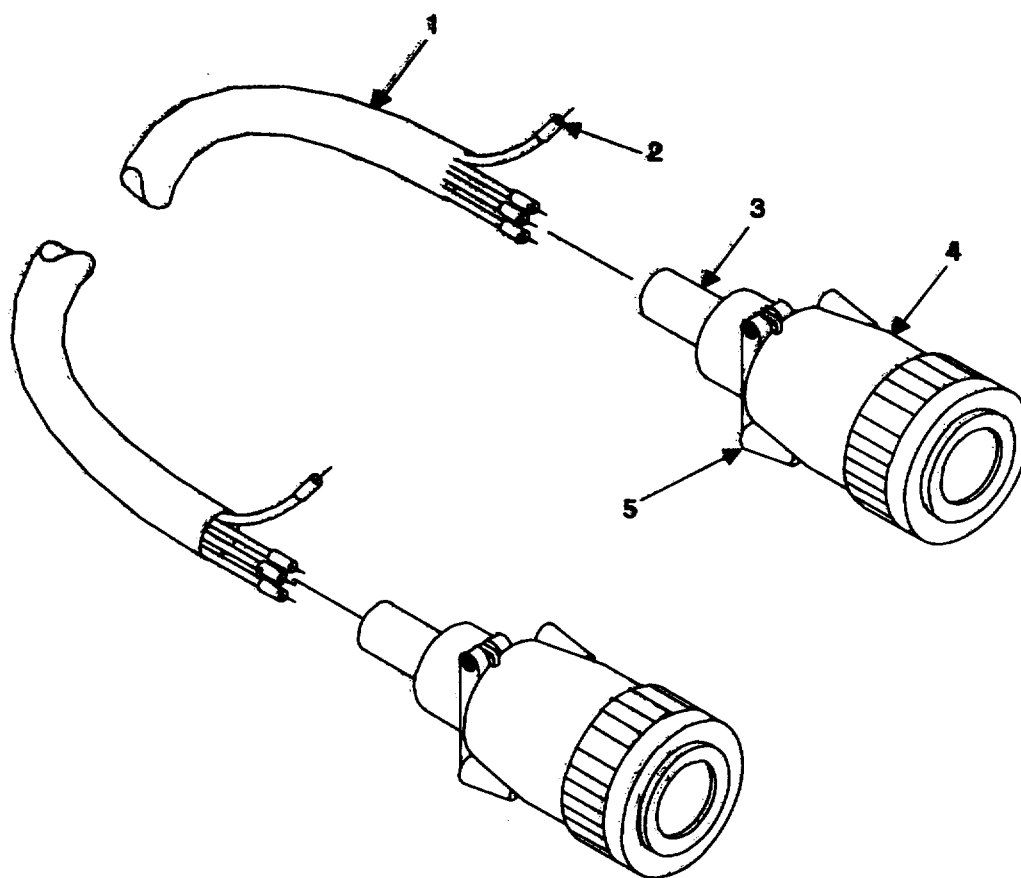


Figure 4. Cable Assembly 11784509

**SECTION II**

**TM 9-6920-742-24P-5**

(1) ITEM NO.	(2) SMR CODE	(3) NSN	(4) CAGEC	(5) PART NUMBER	(6) DESCRIPTION AND USABLE ON CODE (UOC)	(7) QTY
GROUP 0102 FIG. 4 CABLE ASSEMBLY, 11784509						
01	PAFZZ	6145013852711	19200	12599347-3	CABLE, POWER, ELECTRICAL 4 CONDUCTOR .....	V
02	MFFZZ		81349	MS23053/5-104-0	INSULATION SLEEVING MAKE FROM.....	V
					5970008122969.....	
03	MFFZZ		81349	M23053/5-108-0	INSULATION SLEEVING MAKE FROM.....	V
					5970008122967.....	
04	PAFZZ	5935005999604	96906	MS3456W16S1S	CONNECTOR, PLUG, ELECTRIC AL.....	2
05	PAFZZ	5935011711966	81349	M85049/52-1-16W	CLAMP, CABLE, ELECTRICAL .....	2

END OF FIGURE

**04-1**

SECTION II.

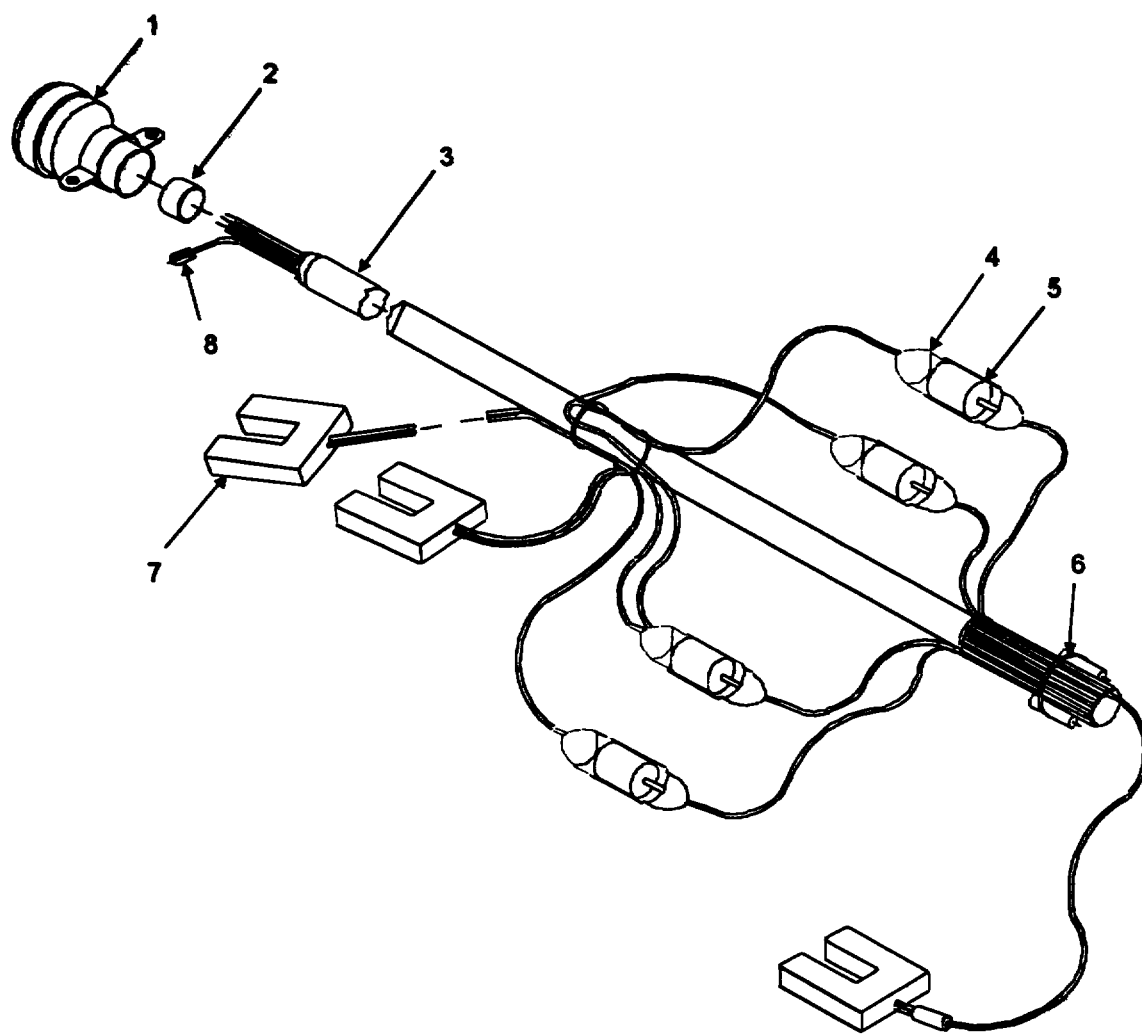


Figure 5. Cable Assembly, Power 11784510



**SECTION II**

**TM 9-6920-742-24P-5**

(1) ITEM NO.	(2) SMR CODE	(3) NSN	(4) CAGEC	(5) PART NUMBER	(6) DESCRIPTION AND USABLE ON CODE (UOC)	(7) QTY
GROUP 0103 FIG. 5 CABLE ASSEMBLY, POWER 11784510						
01	PAFZA	5935012078376	19200	11784662	CONNECTOR, PLUG, ELECTRIC .....	1
02	MFFZZ		81349	M23053/5-106-0	INSULATION SLEEVING MAKE FROM..... V 5970008151295.....	
03	PAFZZ	6145013852711	19200	12599347-3	CABLE, POWER, ELECTRICAL .....	V
04	MFFZZ		81349	M23053/5-108-0	INSULATION SLEEVING MAKE FROM..... V 5970008122967.....	
05	PAFZZ	5940010791647	81349	M7928/5-3	SPLICE, CONDUCTOR .....	4
06	PAFZZ	5975007275153	96906	MS3367-4-9	STRAP, TIEDOWN, ELECTRICAL.....	1
07	PAFZZ	5930011953539	19200	11784511	SWITCH, PROXIMITY .....	3
08	MFFZZ		81349	M23053/5-104-0	INSULATION SLEEVING MAKE FROM..... V 5970008122969.....	

END OF FIGURE

SECTION II.

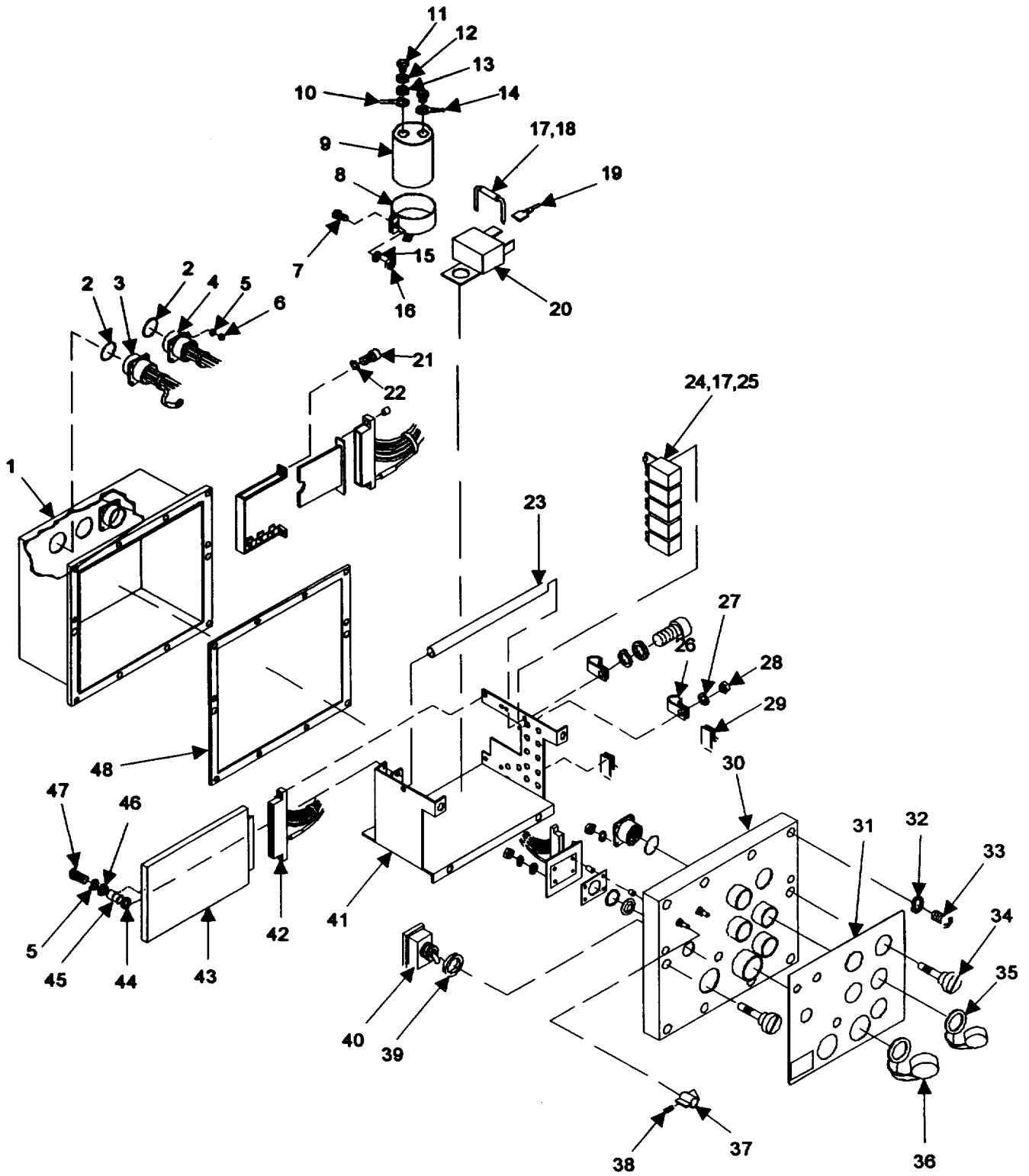


Figure 6. Control Assembly 11784504 (Sheet 1 of 3)

SECTION II.

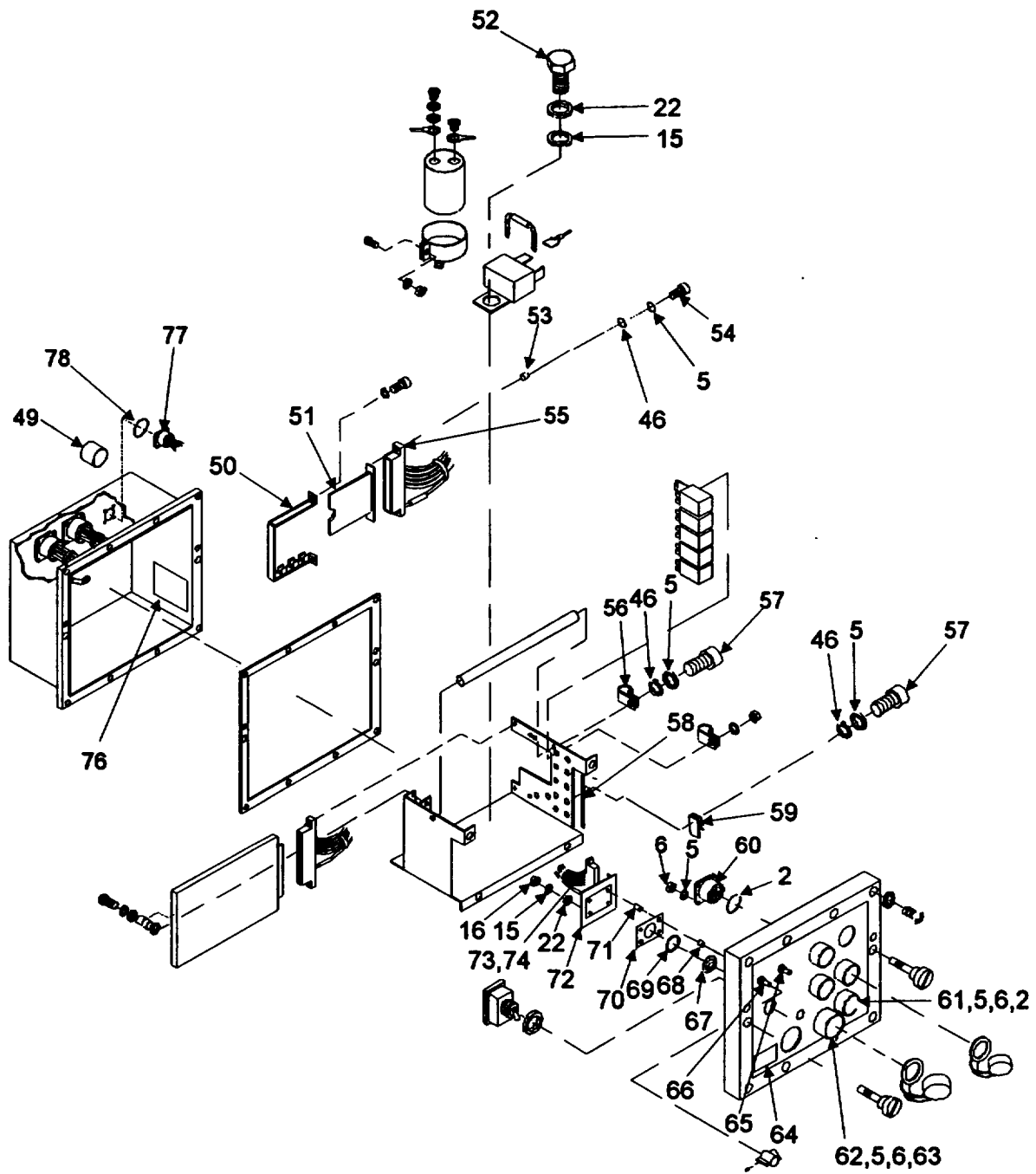


Figure 6. Control Assembly 11784504 (Sheet 2 of 3)

SECTION II.

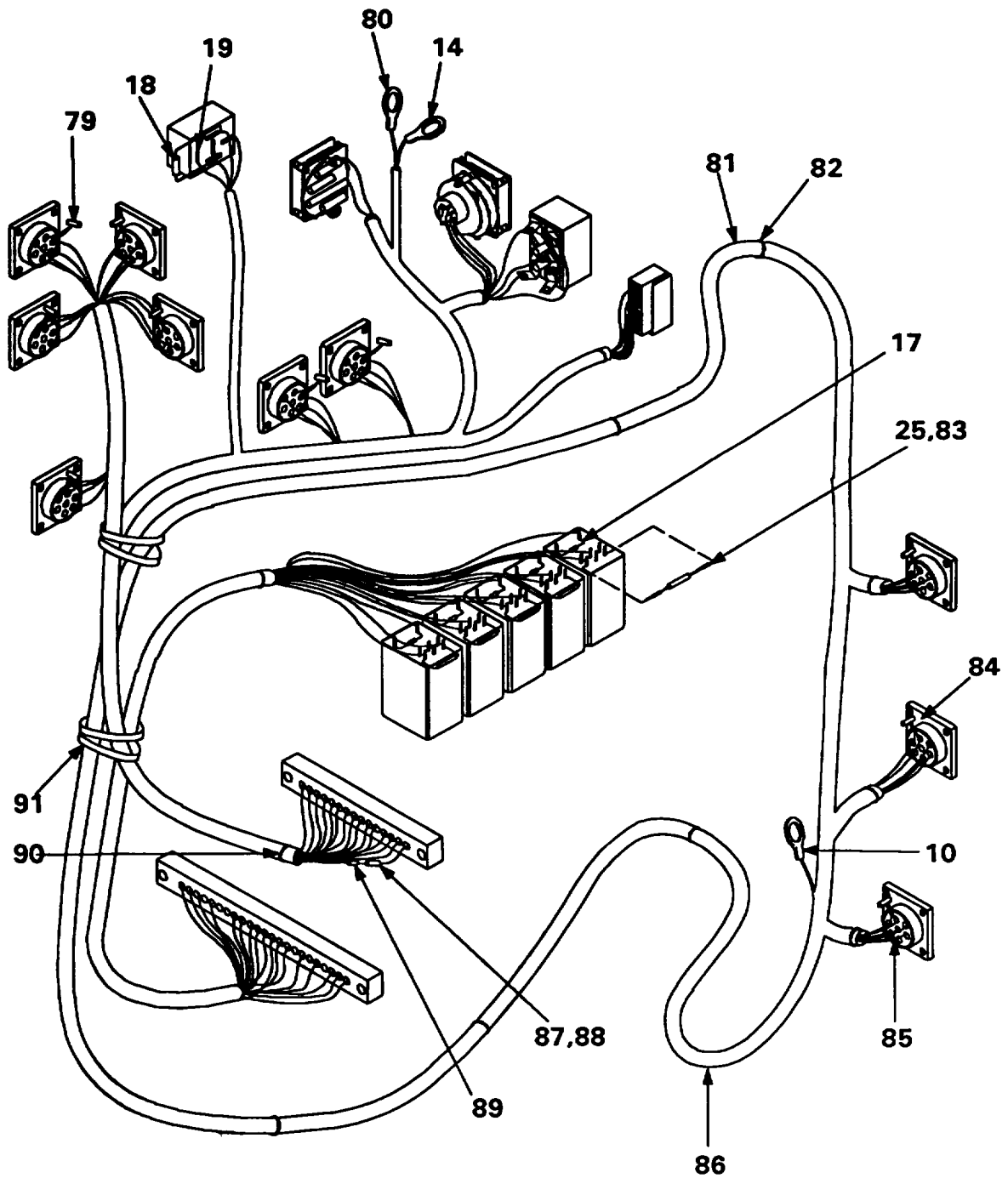


Figure 6. Control Assembly 11784504 (Sheet 3 of 3)

## SECTION II

TM 9-6920-742-24P-5

(1) ITEM NO.	(2) SMR CODE	(3) NSN	(4) CAGEC	(5) PART NUMBER	(6) DESCRIPTION AND USABLE ON CODE (UOC)	(7) QTY
GROUP 0104 FIG. 6 CONTROL ASSEMBLY 11784504						
01	XBFZZ		19200	11784633	BOX, ELECTRONIC UNIT.....	1
02	PAFZZ	5330009468344	96906	MS5200-5	GASKET .....	7
03	PAFZZ	5935011051187	96906	MS3452W16S-1S	CONNECTOR, RECEPTACLE.....	1
04	PAFZZ	5935010355156	96906	MS3452W16S1P	CONNECTOR, RECEPTACLE.....	1
05	PAFZZ	5310001937577	96906	MS35333-36	WASHER, LOCK.....	52
06	PAFZZ	5310009349739	96906	MS35649-242	NUT, PLAIN, HEXAGON.....	40
07	PAFZZ	5305009846194	96906	MS35206-246	SCREW, MACHINE .....	1
08	PAFZZ	5910006494142	19200	11784671	RETAINER, CAPACITOR .....	1
09	PAFZZ	5910012073566	19200	11784670	CAPACITOR, FIXED, ELECTRICAL .....	1
10	PAFZZ	5940001139828	96906	MS25036-148	TERMINAL, LUG.....	1
11	PAFZZ	5305002062508	96906	MS35215-53	SCREW, MACHINE .....	2
12	PAFZZ	5310005765752	96906	MS35333-39	WASHER, LOCK.....	2
13	PAFZZ	5310000455207	96906	MS15795-908	WASHER, FLAT.....	2
14	PAFZZ	5940001434780	96906	MS25036-108	TERMINAL, LUG.....	1
15	PAFZZ	5310008098544	96906	MS27183-7	WASHER, FLAT.....	13
16	PAFZZ	5310009349757	96906	MS35649-282	NUT, PLAIN, HEXAGON.....	9
17	PAFZZ	5961009149740	81349	JAN1N4246	SEMICONDUCTOR DEVICE .....	6
18	MFFZZ		81349	M23053/5-205-C	INSULATION SLEEVING MAKE FROM..... V 5970007670515	
19	XDFZZ		19200	11784559-2	TERMINAL, QUICK DISCONNECT.....	4
20	PAFZZ	5945012092983	19200	11784649	RELAY, ELECTROMAGNETIC .....	1
21	PAFZZ	5305012351898	19200	11784555-4	SCREW, MACHINE .....	2
22	PAFZZ	5310005590070	96906	MS35333-38	WASHER, LOCK.....	14
23	PAFZZ	5340012097818	19200	11784641	ROD, STRAIGHT, HEADLESS .....	1
24	PAFZZ	5945012079434	19200	11784648	RELAY, ELECTROMAGNETIC .....	5
25	MFFZZ		81348	QQW343S20SIT	WIRE, ELECTRICAL MAKE FROM .....	V
26	PAFZZ	5340012364105	19200	11784669-3	6145008397432 CLAMP, LOOP.....	1
27	PAFZZ	5310005790079	96906	MS35333-37	WASHER, LOCK.....	5
28	PAFZZ	5310009349747	96906	MS35649-262	NUT, PLAIN, HEXAGON.....	5
29	PAFZZ	5340011777702	19200	11784669-4	CLAMP, LOOP .....	1
30	XDFZZ		19200	11784632	PANEL, ELECTRONIC UNIT .....	1
31	PAFZZ	7690012098655	19200	11784636	MARKER, IDENTIFICATION.....	1
32	PAFZZ	5310005501130	96906	MS35333-40	WASHER, LOCK.....	10
33	PAFZZ	5305009881723	96906	MS35206-279	SCREW, MACHINE .....	10
34	PAFZZ	5305012111377	19200	11784638	SCREW, MACHINE .....	2
35	PAFZZ	5935011951761	19200	11784631	COVER, ELECTRICAL CONNECTOR.....	5
36	PAFZZ	5935012391555	19200	11784630	COVER, ELECTRICAL CONNECTOR.....	2
37	PAFZZ	5355006169604	96906	MS91528-1P2B	KNOB.....	2
38	PAFZZ	5305006559246	96906	MS51021-10	SETSCREW.....	4
39	PAFZZ	5330012132421	19200	11784629	O-RING .....	1
40	PAFZA	5930009014275	96906	MS25307-272	SWITCH, TOGGLE .....	1
41	PAFZZ	5999012162560	19200	11784635	CHASSIS, ELECTRICAL-ELECTRONIC..... EQUIPMENT.....	1
42	PAFZZ	5935005631173	19200	11784658-2	CONNECTOR, RECEPTACLE.....	1
43	PAFZZ	5999012044175	19200	11784523	CIRCUIT CARD ASSEMBLY (LOGIC) .....	1
44	PAFZZ	5310012101605	19200	11784639	NUT STRIP.....	1
45	PAFZZ	5365012132426	19200	11784628	SPACER, SLEEVE.....	2
46	PAFZZ	5310009501310	96906	MS27183-4	WASHER, FLAT.....	12

## SECTION II

TM 9-6920-742-24P-5

(1) ITEM NO.	(2) SMR CODE	(3) NSN	(4) CAGEC	(5) PART NUMBER	(6) DESCRIPTION AND USABLE ON CODE (UOC)	(7) QTY
47	PAFZZ	5305009844978	96906	MS35206-221	SCREW, MACHINE .....	2
48	PAFZZ	5330012111342	19200	11784634	GASKET .....	1
49	PAFZZ	5365012075755	19200	11784645	PLUG, MACHINE THREAD.....	1
50	PAFZZ	5998013742340	19200	9360577	BRACKET, MOUNTING .....	1
51	PAFZZ	5999012044176	19200	11784526	CIRCUIT CARD ASSEMBLY (AMPLIFIER).....	1
52	PAFZZ	5305009846189	96906	MS35206-241	SCREW, MACHINE .....	4
53	PAFZZ	5365012146400	19200	11784644-1	SPACER, PLATE .....	2
54	PAFZZ	5305009836730	96906	MS35206-218	SCREW, MACHINE .....	2
55	PAFZA	5935012387770	19200	11784658-1	CONNECTOR, RECEPTACLE.....	1
56	PAFZZ	5340002827965	19200	11784669-1	CLAMP, LOOP .....	1
57	PAFZZ	5305008892999	96906	MS35206-217	SCREW, MACHINE .....	6
58	PAFZZ	9390012169346	19200	11784646	NONMETALLIC CHANNEL .....	1
59	PAFZZ	5340002168352	19200	11784669-5	CLAMP, LOOP .....	1
60	PAFZZ	5935010949306	19200	11784663	CONNECTOR, RECEPTACLE.....	4
61	PAFZA	5935012078380	19200	11784665	CONNECTOR, RECEPTACLE.....	1
62	PAFZZ	5935012060218	19200	9384688	CONNECTOR, RECEPTACLE.....	2
63	PAFZZ	5330009681753	96906	MS52000-7	GASKET .....	2
64	XDFZZ		19200	11784542	PLATE, IDENTIFICATION.....	1
65	PAFZZ	5930012082275	19200	11784530	SWITCH, ROTARY .....	1
66	PAFZZ	5930012098516	19200	11784529	SWITCH, ROTARY .....	1
67	PAFZZ	6210012146430	19200	11784640	LENS, LIGHT .....	1
68	PAFZZ	5365012172088	19200	11784644-2	SPACER, SLEEVE.....	4
69	PAFZZ	5330006843420	96906	MS28775-013	O-RING .....	1
70	PAFZZ	6920012146249	19200	11784637	PLATE, LENS CLAMP .....	1
71	PAFZZ	5365007262038	19200	11784644-3	SPACER, SLEEVE.....	4
72	PAFZZ	5999012044174	19200	11784531	CIRCUIT CARD ASSEMBLY (BATTERY TEST) .....	1
73	PAFZZ	5935012081990	19200	11784657-1	CONNECTOR, PLUG, ELECTRICAL .....	1
74	PAFZZ	6145012144016	19200	12599347-2	CABLE, POWER, ELECTRICAL 12 CONDUCTOR .....	V
75	PAFZZ	6920012246370	19200	11784657-2	TERMINAL, PLUG .....	8
76	PAFZZ	6850012180679	19200	11784647	DESICCANT, ACTIVATED.....	1
77	PAFZZ	5935012357568	19200	11784661	CONNECTOR, RECEPTACLE, ELECTRICAL .....	1
78	PAFZZ	5330006414338	96906	MS52000-4	GASKET .....	1
79	PAFZZ	5910001135515	81349	M39014/01-1333	CAPACITOR, FIXED, CERAMIC.....	4
80	PAFZZ	5940008040365	96906	MS25036-146	TERMINAL, LUG.....	1
81	MFFZZ		81349	M22759/11-2-9	WIRE, ELECTRICAL MAKE FROM M22759/11-2-9.....	V
82	PAFZZ	5975007275153	96906	MS3367-4-9	STRAP, TIEDOWN, ELECTRICAL.....	45
83	MFFZZ		81349	MLI22129	INSULATION SLEEVING MAKE FROM.....	V
					5970000079587	
84	PAFZZ	5910000108717	81349	M39014/01-1593	CAPACITOR, FIXED, CERAMIC.....	2
85	MFFZZ		81349	M23053/5-104-0	INSULATION SLEEVING MAKE FROM.....	V
					5970008122969	
86	MFFZZ		81349	M16878/12BHE6	WIRE, ELECTRICAL MAKE FROM 6145-01-332-1528...	V
87	PAFZZ	5905001045755	81349	RCR20G100JS	RESISTOR, FIXED, COMPOSITION .....	1
88	MFFZZ		81349	M23053/5-105-0	INSULATION SLEEVING MAKE FROM 5970-.....	V
					00-954-1622	
89	PAFZZ	5940013756597	19200	9365816	SPLICE, CONDUCTOR .....	V
90	MFFZZ		81349	M23053/5-108-0	INSULATION SLEEVING MAKE FROM.....	V
					5970008122967	
91	PAFZZ	5975000742072	96906	MS3367-1-9	STRAP, TIEDOWN, ELECTRICAL.....	4

END OF FIGURE

SECTION II.

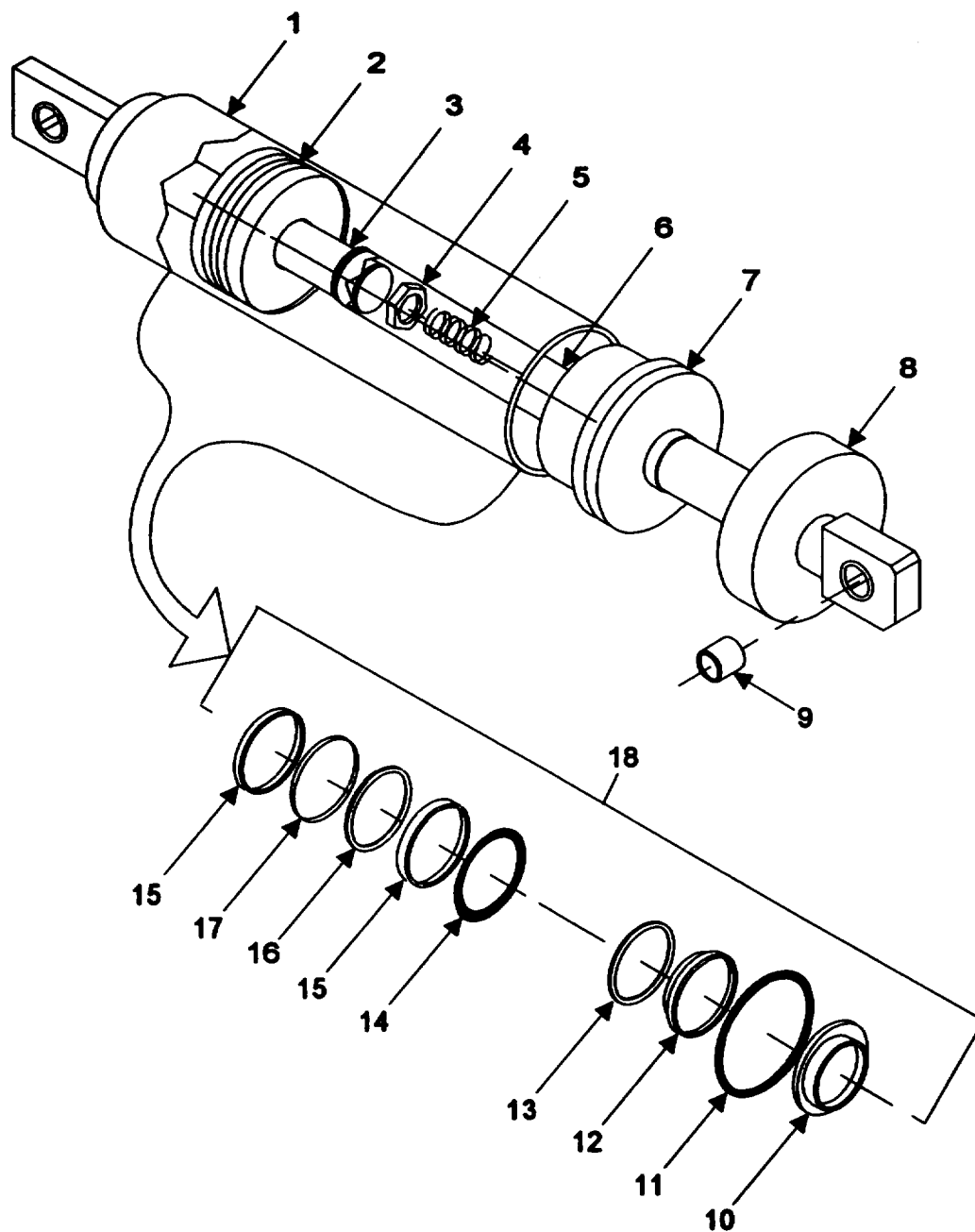


Figure 7. Hydraulic Cylinder 11784619-1

SECTION II

TM 9-6920-742-24P-5

(1) ITEM NO.	(2) SMR CODE	(3) NSN	(4) CAGEC	(5) PART NUMBER	(6) DESCRIPTION AND USABLE ON CODE (UOC)	(7) QTY
GROUP 0105 FIG. 7 HYDRAULIC CYLINDER 11784619-1						
01	XDFZZ		65150	BT01BRA00	BARREL ASSEMBLY .....	1
02	XDFZZ		65150	BT01PT000	PISTON.....	1
03	XDFZZ		65150	BT01CT000	CUSHION, SPEAR.....	1
04	XDFZZ		65150	302CD0000	LOCKNUT .....	1
05	XDFZZ		65150	452000001	SPRING .....	1
06	XDFZZ		65150	BT01PRA00	PISTON ROD ASSEMBLY .....	1
07	XDFZZ		65150	NW03GL000	GLAND, STUFFING TUBE.....	1
08	XDFZZ		65150	NW04GR000	COLLAR, BARREL.....	1
09	XDFZZ		65150	402122300	BUSHING .....	2
10	KFFZZ		65150	26110010D0	ROD WIPER PART OF KIT P/N BT01PK001 .....	1
11	KFFZZ		65150	20-AC02H0	GLAND SEAL PART OF KIT P/N BT01PK001 .....	1
12	KFFZZ		65150	2521L01D0	ROD SEAL PART OF KIT P/N BT01PK001 .....	1
13	KFFZZ		65150	20-AC0100	ROD SEAL EXPANDER PART OF KIT P/N .....	1
					BT01PK001.....	
14	KFFZZ		65150	20-AA01F0	PISTON AND ROD SEAL PART OF KIT P/N .....	1
					4T01PK001 .....	
15	KFFZZ		65150	271HC02H0	PISTON WEAR RING PART OF KIT P/N .....	2
					BT01PK001 .....	
16	KFFZZ		65150	244IC02H0	PISTON SEAL PART OF KIT P/N .....	1
					BT01PK001 .....	
17	KFFZZ		65150	20-AB02D0	PISTON SEAL EXPANDER PART OF KIT .....	1
					P/N BT01PK001 .....	
					GLAND SEAL ( 1) 07-11	
18	PAFZZ	6920012351762	65150	BT01PK001	KIT, REPAIR .....	1
					PISTON AND ROD SEAL ( 1) 07-14	
					PISTON SEAL EXPANDE ( 1) 07-17	
					PISTON SEAL ( 1) 07-16	
					PISTON WEAR RING ( 2) 07-15	
					ROD SEAL EXPANDER ( 1) 07-13	
					ROD SEAL ( 1) 07-12	
					ROD WIPER ( 1) 07-10	

END OF FIGURE



SECTION II.

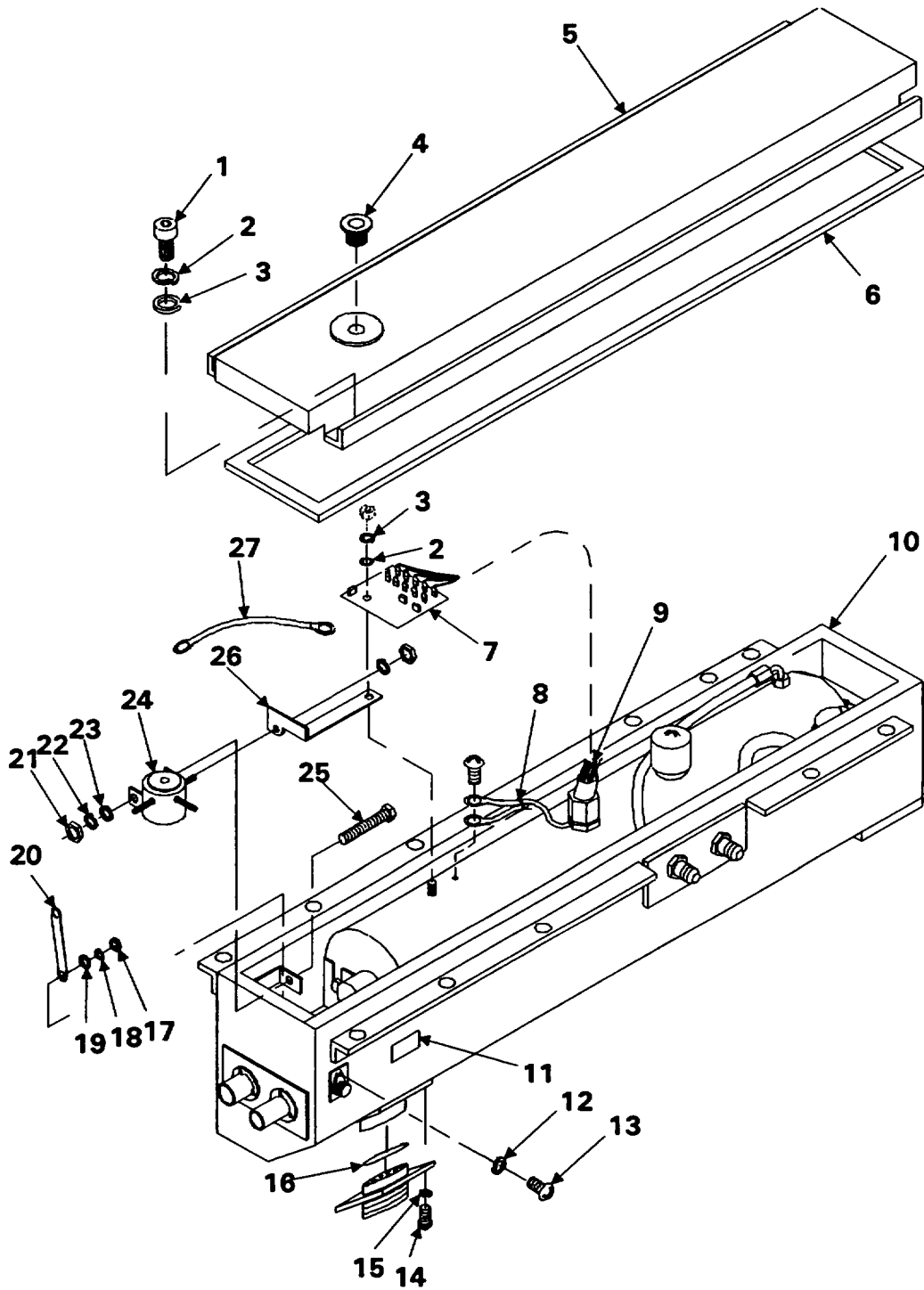


Figure 8. Hydraulic Unit Assembly 9375758 (Sheet 1 of 2)

SECTION II.

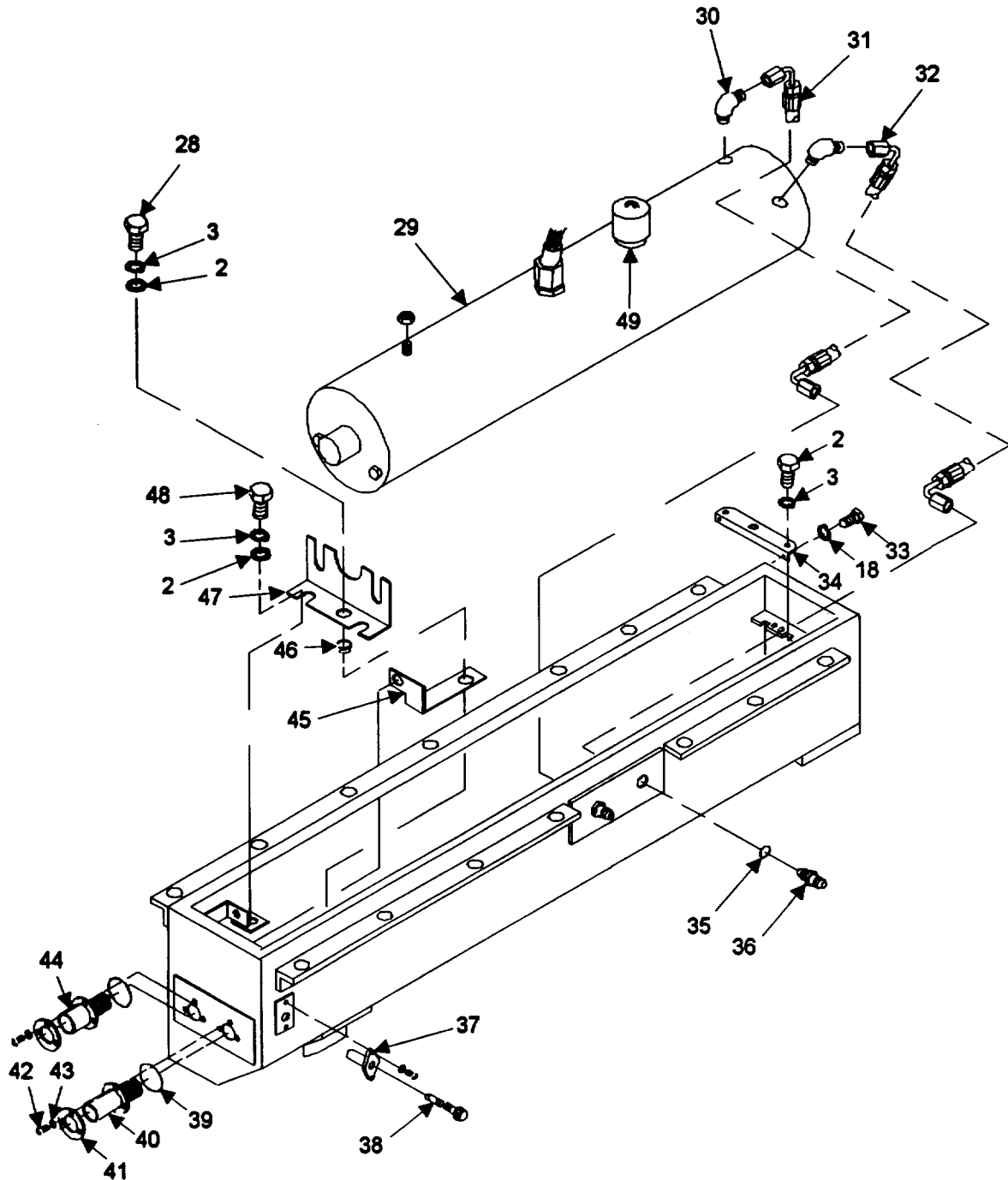


Figure 8. Hydraulic Unit Assembly 9375758 (Sheet 2 of 2)

## SECTION II

TM 9-6920-742-24P-5

(1) ITEM NO.	(2) SMR CODE	(3) NSN	(4) CAGEC	(5) PART NUMBER	(6) DESCRIPTION AND USABLE ON CODE (UOC)	(7) QTY
GROUP 0106 FIG. 8 HYDRAULIC UNIT ASSEMBLY 9375758						
01	PAFZZ	5305009838084	96906	MS16997-60	SCREW, CAP, SOCKET HEAD .....	14
02	PAFZZ	5310005825965	96906	MS35338-44	WASHER, LOCK.....	18
03	PAFZZ	5310008094058	96906	MS27183-10	WASHER, FLAT.....	16
04	PAFZZ	5365012075755	19200	11784645	PLUG, MACHINE THREAD.....	1
05	XDFZZ		19200	9375740	COVER, ACCESS.....	1
06	PAFZZ	5330012351875	19200	9375743	GASKET .....	1
07	PAFZZ	5999012391611	19200	11784514	CIRCUIT CARD ASSEMBLY.....	1
08	PAFZZ	5975000742072	96906	MS3367-1-9	STRAP, TIEDOWN, ELECTRICAL.....	2
09	PAFZZ	5995012391552	19200	93757571	CABLE ASSEMBLY, SPECIAL .....	1
10	PAFZZ	6920012416111	19200	9375754	BOX, HYDRAULIC UNIT.....	1
11	XDFZZ		19200	9375727	SIGN, SERIAL NUMBER .....	1
12	PAFZZ	5310005590070	96906	MS35333-38	WASHER, LOCK.....	2
13	PAFZZ	5305009846191	96906	MS35206-243	SCREW, MACHINE .....	2
14	PAFZZ	5305008892997	96906	MS35206-215	SCREW, MACHINE .....	4
15	PAFZZ	5310001937577	96906	MS35333-36	WASHER, LOCK.....	4
16	PAFZZ	5330009468344	96906	MS52000-5	GASKET .....	1
17	PAFZZ	5310008807744	96906	MS51967-5	NUT, PLAIN, HEXAGON.....	2
18	PAFZZ	5310004079566	96906	MS35338-45	WASHER, LOCK.....	6
19	PAFZZ	5310000814219	96906	MS27183-12	WASHER, FLAT.....	4
20	PAFZZ	6150012351974	19200	9375713	BUS, CONDUCTOR.....	1
21	PAFZZ	5310009349751	96906	MS35650-302	NUT, PLAIN, HEXAGON.....	1
22	PAFZZ	5310000453296	96906	MS35338-43	WASHER, LOCK.....	1
23	PAFZZ	5310000145850	96906	MS27183-42	WASHER, FLAT.....	1
24	PAFZZ	5930013031296	19200	9360576	SWITCH, SOLENOID.....	1
25	PAFZZ	5306013730397	96906	MS9783-24	SCREW, MACHINE .....	1
26	PAFZZ	6150012351976	19200	9375714	BUS, CONDUCTOR.....	1
27	PAFZZ	6920012351769	19200	9375731	WIRE ASSEMBLY .....	1
28	PAFZZ	5305000680502	96906	MS90725-6	SCREW, CAP, HEXAGON HEAD .....	3
29	PAFZZ	4320013422401	19200	12598336	MOTOR, HYDRAULIC .....	1
30	PAFZZ	4730013747803	19200	9375726	ELBOW, PIPE .....	2
31	PAFZZ	4720012351771	19200	9375746	HOSE, HYDRAULIC.....	1
32	PAFZZ	4720012351770	19200	9375748	HOSE ASSEMBLY, NONMETALLIC.....	1
33	PAFZZ	5306002264825	80204	B1821BH031C075N	BOLT, MACHINE .....	2
34	PAFZZ	5340012351772	19200	9375752	BRACKET, MOUNTING .....	1
35	PAFZZ	5330010463300	81349	M83461/1-012	PACKING, PREFORMED .....	2
36	PAFZZ	4730006799280	96906	MS51520A4	NIPPLE, TUBE .....	2
37	PAFZZ	5920012391551	19200	9375730	FUSEHOLDER, RECEPTACLE .....	1
38	PAOZZ	5920001994019	81349	F09B250V6-1/4A	FUSE, CARTRIDGE.....	1
39	PAFZZ	5330005857723	96906	MS28775-020	PACKING, PREFORMED .....	2
40	PAFZZ	5935012391550	19200	9375718	CONNECTOR, RECEPTACLE.....	1
41	PAFZZ	5310012351922	19200	9375729	WASHER FLAT.....	2
42	PAFZZ	5305009846194	96906	MS35206-246	SCREW MACHINE .....	6
43	PAFZZ	5310000453299	96906	MS35338-42	WASHER, LOCK.....	6
44	PAFZZ	5935012391549	19200	9375717	CONNECTOR, RECEPTACLE.....	1
45	PAFZZ	6150012351975	19200	9375712	BUS, CONDUCTOR.....	1
46	PAFZZ	5310000068291	96906	MS27130-S32	NUT, PLAIN, BLIND RIVET.....	1
47	XDFZZ		19200	937S573	BRACKET, MOUNTING.....	1
48	PAFZZ	5306002258499	96906	MS90725-34	BOLT, MACHINE .....	2
49	PAFZZ	5340012351960	94433	61143	PLUG, VENT.....	1

END OF FIGURE

SECTION II.

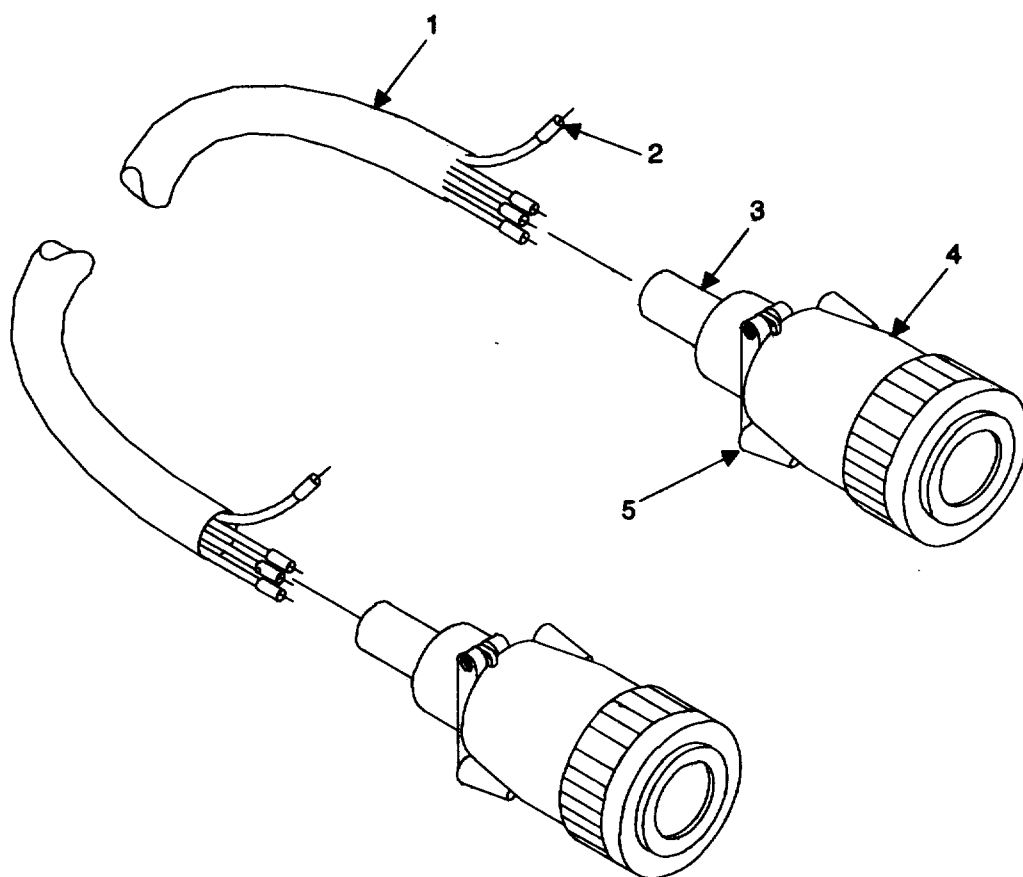


Figure 9. Cable Assembly 11784508

**SECTION II**

**TM 9-6920-742-24P-5**

(1) ITEM NO.	(2) SMR CODE	(3) NSN	(4) CAGEC	(5) PART NUMBER	(6) DESCRIPTION AND USABLE ON CODE (UOC)	(7) QTY
GROUP 0109 FIG. 9 CABLE ASSEMBLY 11784508						
01	XDFZZ		19200	12599347-1	CABLE, POWER, ELECTRICAL 8 ..... V CONDUCTORS UOC: AL5.....	V
02	MFFZZ		81349	M23053/5-104-0	INSULATION SLEEVING MAKE FROM..... V 5970008122969 UOC: AL5 .....	V
03	MFFZZ		81349	M23053/5-108-0	INSULATION SLEEVING MAKE FROM 5970-..... V 00-812-2967 UOC: AL5.....	V
04	PAFZZ	5935010506586	96906	MS3456W16S-1P	CONNECTOR, PLUG, ELECTRICAL UOC: AL5.....	2
05	PAFZZ	5935011711966	81349	M85049/52-1-16W	CLAMP, CABLE, ELECTRICAL UOC: AL5 .....	2

END OF FIGURE

**09-1**

SECTION II.

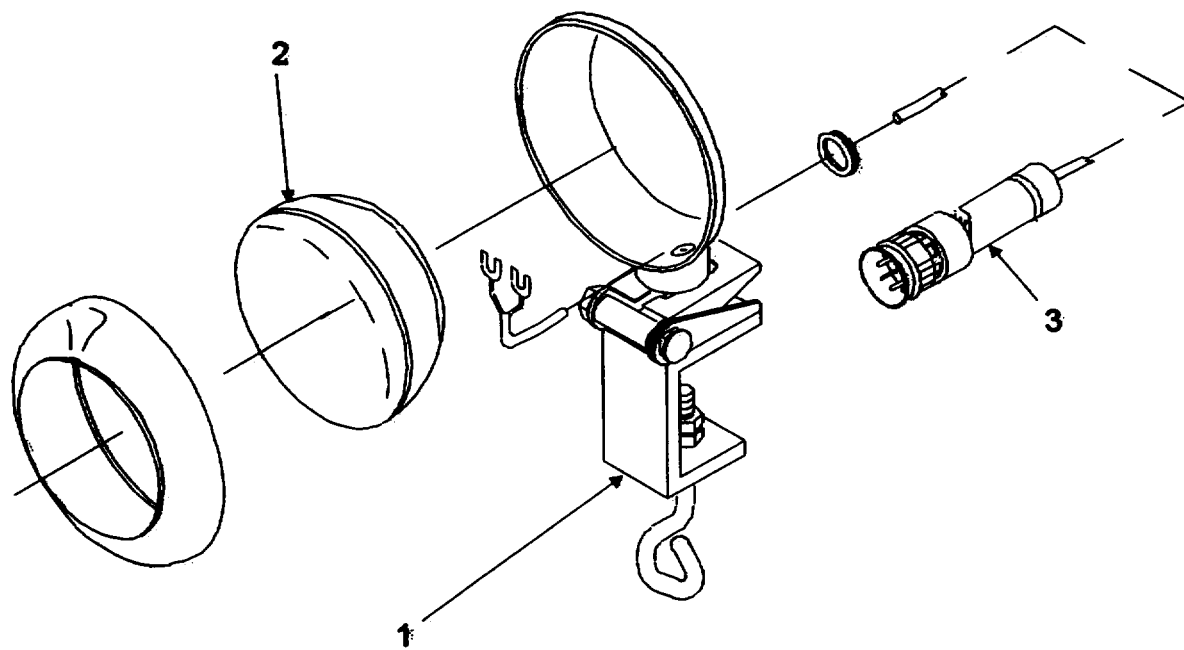


Figure 10. Lamp Assembly 11784475

**SECTION II**

**TM 9-6920-742-24P-5**

(1) ITEM NO.	(2) SMR CODE	(3) NSN	(4) CAGEC	(5) PART NUMBER	(6) DESCRIPTION AND USABLE ON CODE (UOC)	(7) QTY
GROUP 03 FIG. 10 LAMP ASSEMBLY 11784475						
01	XAOZZ		19200	11785549	LAMP ASSEMBLY .....	1
02	PAOZZ	6240013050906	19200	11784473	LAMP, INCANDESCENT .....	1
03	PAOFF	6150011951754	19200	11784476	CABLE ASSEMBLY, SPECIAL SEE FIG 11 .....	1
					FOR BREAKDOWN .....	

END OF FIGURE

SECTION II.

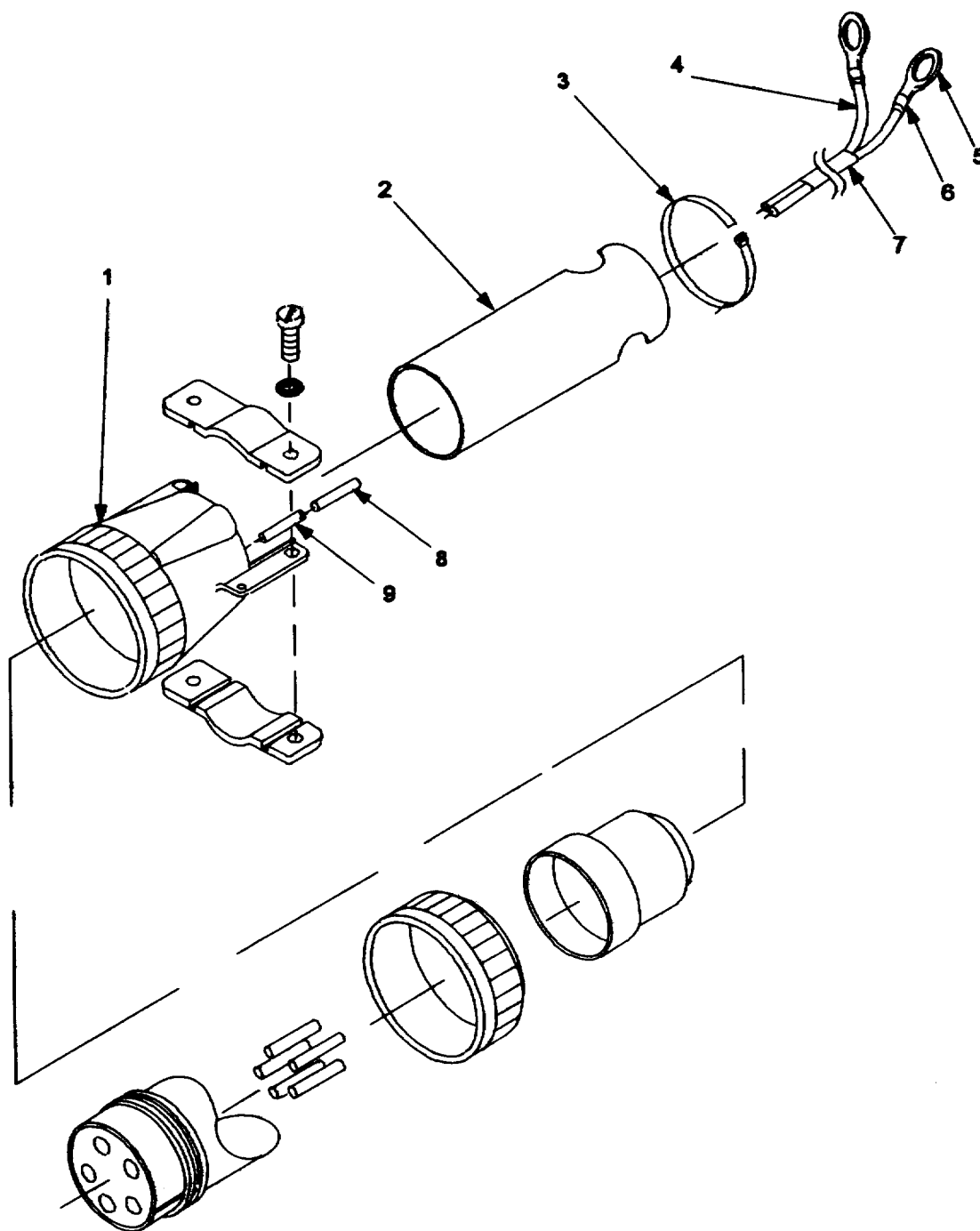


Figure 11. Cable Assembly, Special 11784476



**SECTION II**

**TM 9-6920-742-24P-5**

(1) ITEM NO.	(2) SMR CODE	(3) NSN	(4) CAGEC	(5) PART NUMBER	(6) DESCRIPTION AND USABLE ON CODE (UOC)	(7) QTY
GROUP 0301 FIG. 11 CABLE ASSEMBLY, SPECIAL 11784476						
01	PAFZZ	5935013808256	19200	11784666	CONNECTOR, RECEPTACLE, ELECTRICAL.....	1
02	PAFZZ	5975009367377	96906	MS3420-8	BUSHING, ELECTRICAL .....	1
03	PAFZZ	5975007275153	96906	MS3367-4-9	STRAP, TIEDOWN, ELECTRICAL.....	1
04	MFFZZ		81349	C0-02MDE(2/20)SJ 0278	CABLE, POWER, ELECTRICAL MAKE FROM..... V CO-02MDE (2/20) SJ0278.....	
05	PAOZZ	5940005571629	96906	MS25036-149	TERMINAL, LUG.....	2
06	MOOZZ		81349	M23053/5-104-4	INSULATION SLEEVING MAKE FROM..... V 5970007872325.....	
07	MFFZZ		81349	M23053/5-109-4	INSULATION SLEEVING MAKE FROM..... V 5970000573545.....	
08	PAFZZ	5940011357079	81349	M83519/1-5	SPLICE, CONDUCTOR .....	1
09	MFFZA		81349	M22759/11-20-5	WIRE, ELECTRICAL MAKE FROM 6145-00- ..... V 939-4960.....	

END OF FIGURE

SECTION II.

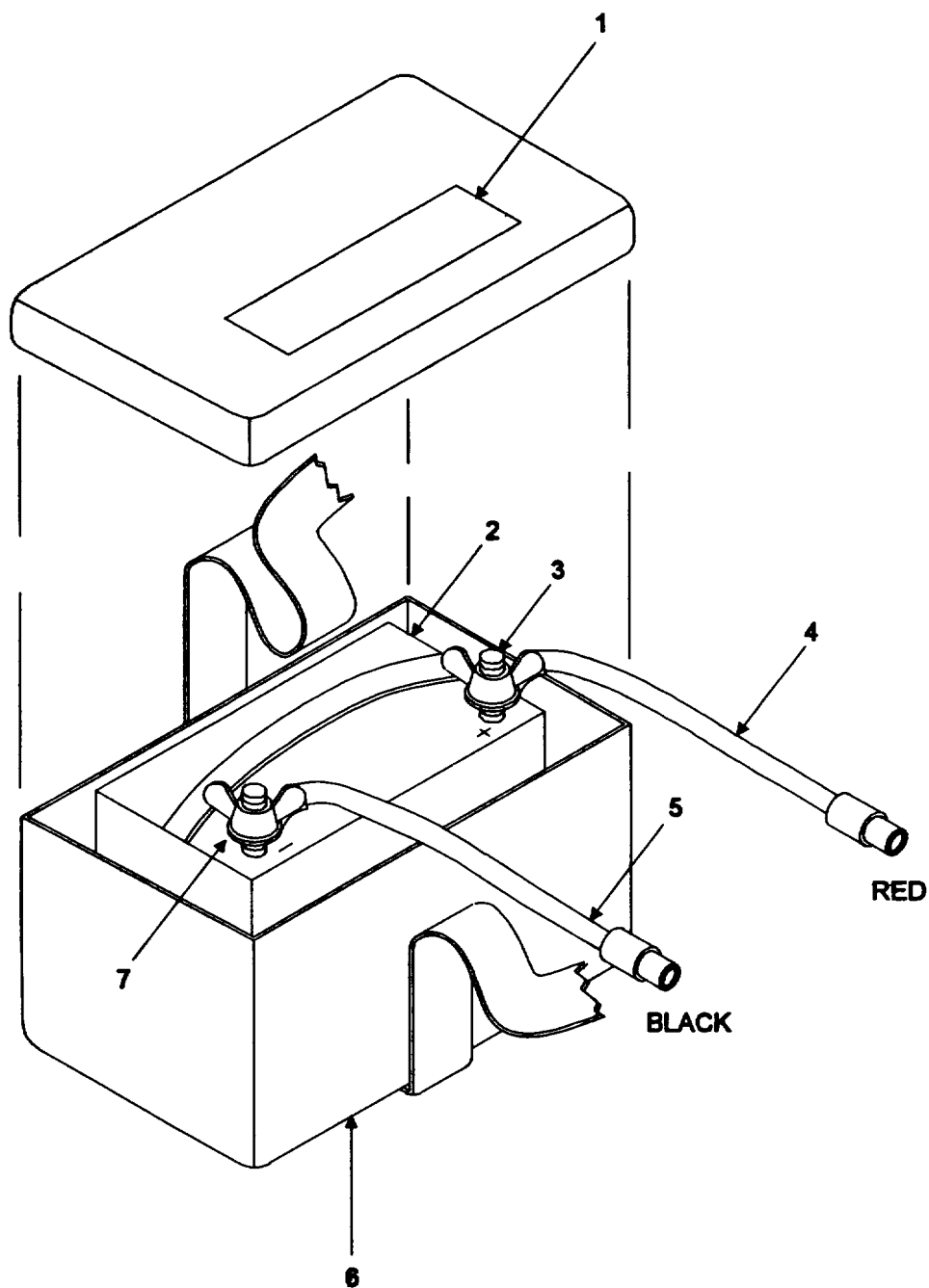


Figure 12. Battery Box Assembly 12950811

**SECTION II**

**TM 9-6920-742-24P-5**

(1) ITEM NO.	(2) SMR CODE	(3) NSN	(4) CAGEC	(5) PART NUMBER	(6) DESCRIPTION AND USABLE ON CODE (UOC)	(7) QTY
GROUP 04 FIG. 12 BATTERY BOX ASSEMBLY 12950811						
01	XDOZZ		19200	9375741	SIGN .....	1
02	PAOBA	6140010321326	08163	C31R-4	BATTERY, STORAGE (STANDARD) UOC: AL6.....	1
02	PAOBA	6140012622272	16764	M27NF	BATTERY, STORAGE (MARINE DEEP .....	1
					CYCLE) UOC: AL5.....	
03	PAOZZ	5310010882490	96906	MS35425-74	NUT, PLAIN, WING .....	2
04	PAOZZ	5935013674430	19200	9356078	JACK, TIP ADAPTER, POSITIVE (RED) .....	1
05	PAOZZ	6150013690285	19200	9356077	LEAD, ELECTRICAL ADAPTER, NEGATIVE .....	1
					(BLACK) .....	
06	PAOZZ	6135012116911	19200	9356194	BATTERY BOX .....	1
07	PAOZZ	5310002090790	96906	MS36335-63	WASHER, LOCK.....	2

END OF FIGURE

SECTION II.

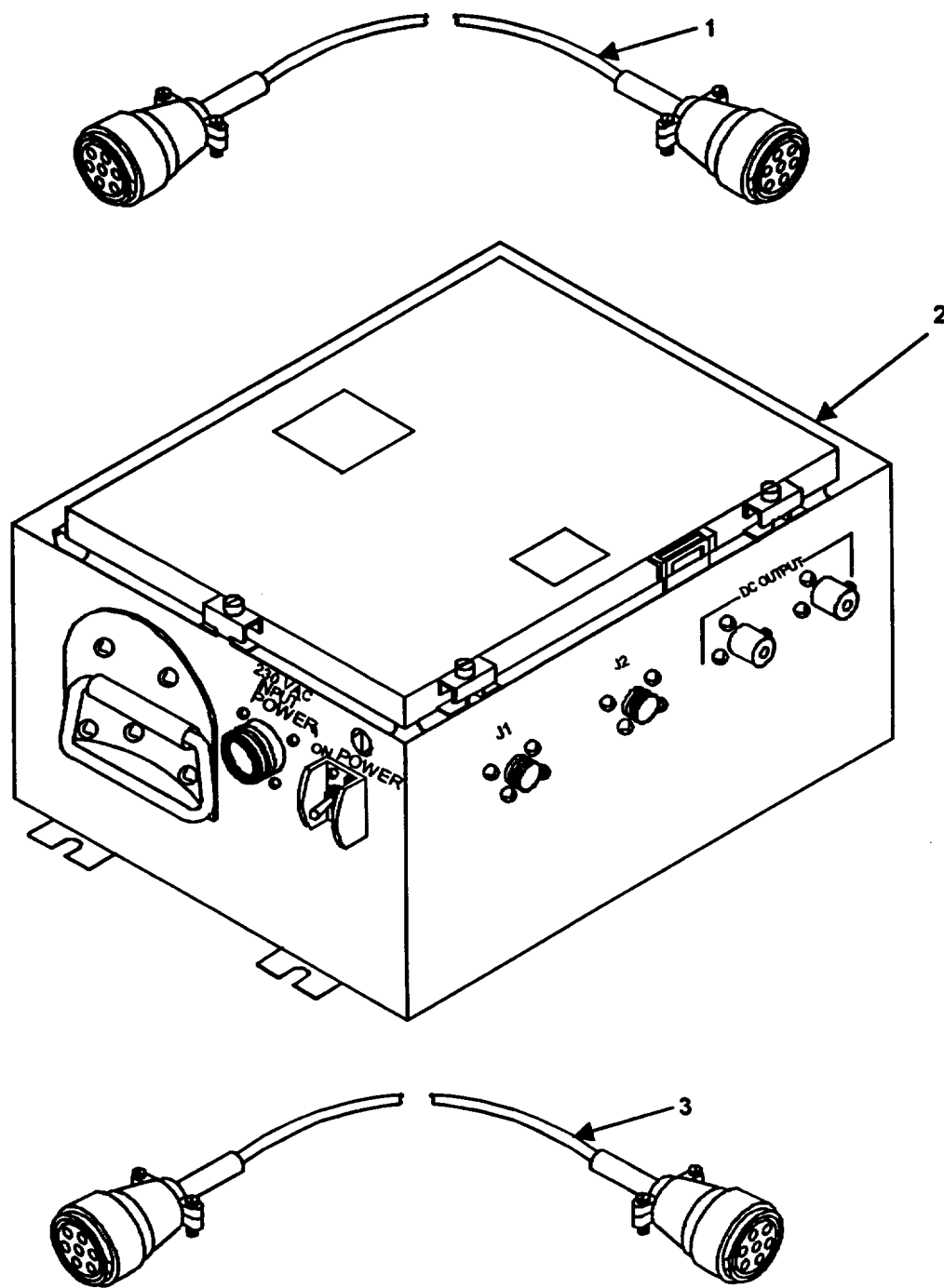


Figure 13. Battery Eliminator 9356185

**SECTION II**

**TM 9-6920-742-24P-5**

(1) ITEM NO.	(2) SMR CODE	(3) NSN	(4) CAGEC	(5) PART NUMBER	(6) DESCRIPTION AND USABLE ON CODE (UOC)	(7) QTY
GROUP 06 FIG. 13 BATTERY ELIMINATOR 9356185						
01	PAOZZ	6150013544394	19200	12934456	CABLE ASSEMBLY, SPECIAL UOC: AL6 .....	1
02	PAOFF	6130013220258	19200	12934455	POWER SUPPLY SEE FIG 14 FOR .....	1
03	PAOZZ	6150013544395	19200	12934457	BREAKDOWN UOC: AL6..... CABLE ASSEMBLY, SPECIAL UOC: AL6 .....	1

END OF FIGURE

SECTION II.

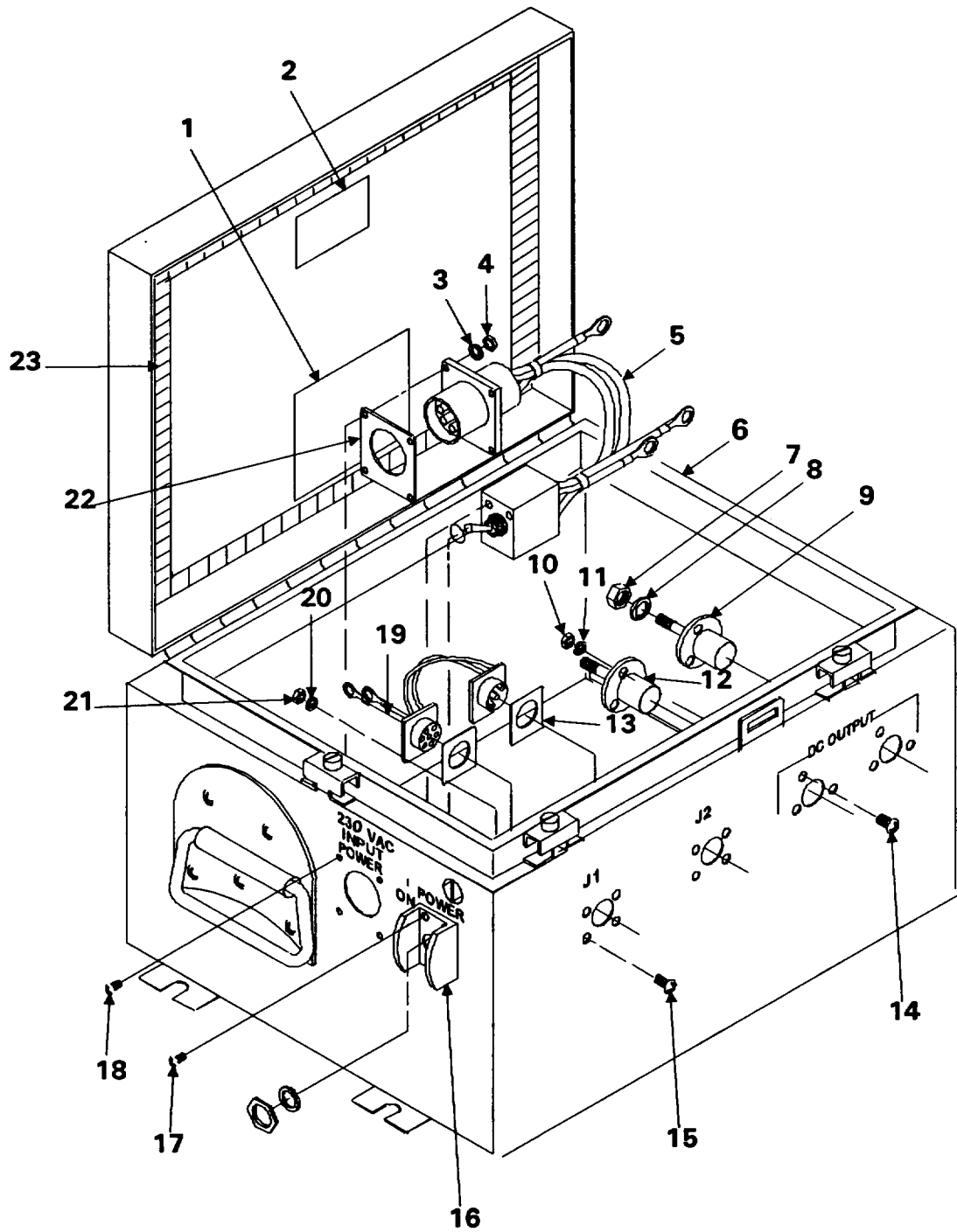


Figure 14. Power Supply 12934455 (Sheet 1 of 2)

SECTION II.

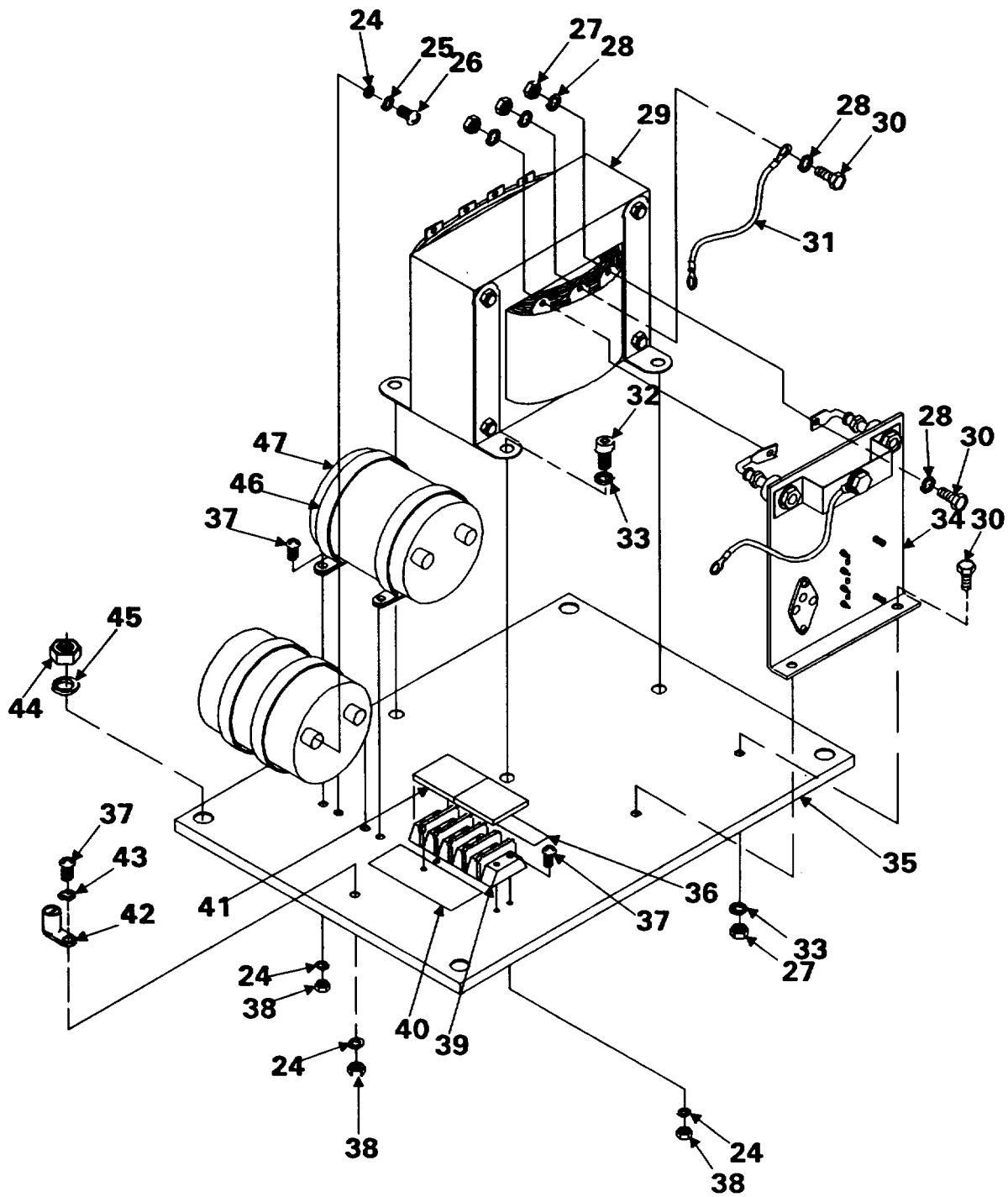


Figure 14. Power Supply 12934455 (Sheet 2 of 2)

## SECTION II

TM 9-6920-742-24P-5

(1) ITEM NO.	(2) SMR CODE	(3) NSN	(4) CAGEC	(5) PART NUMBER	(6) DESCRIPTION AND USABLE ON CODE (UOC)	(7) QTY
GROUP 0601 FIG. 14 POWER SUPPLY 12934455						
01	XDFZZ		19200	11829423	PLATE, IDENTIFICATION UOC: AL6.....	1
02	PAFZZ	7690011631560	19200	9354182-1	DECAL UOC: AL6.....	1
03	PAFZZ	5310006389857	88044	AN960C6L	WASHER, FLAT UOC: AL6.....	4
04	PAFZZ	5310009259646	96906	MS21083C06	NUT, SELF-LOCKING, HEXAGON UOC: AL6.....	4
05	PAFZZ	5925013492227	19200	12934471	CIRCUIT BREAKER SUBASSEMBLY UOC:..... AL6.....	1
06	XBFZZ		19200	12934458	ENCLOSURE UOC: AL6.....	1
07	PAFZZ	5310002453615	96906	MS35649-2314	NUT, PLAIN, HEXAGON UOC: AL6.....	2
08	PAFZZ	5310001788631	96906	MS35333-75	WASHER, LOCK UOC: AL6.....	2
09	PAFZZ	5935012391550	19200	9375718	CONNECTOR, RECEPTACLE UOC: AL6.....	1
10	PAFZZ	5310009368950	96906	MS21083C08	NUT, SELF-LOCKING, HEXAGON UOC: AL6.....	6
11	PAFZZ	5310013529577	80205	NAS1149CN816R	WASHER, FLAT UOC: AL6.....	6
12	PAFZZ	5935012391549	19200	9375717	CONNECTOR, RECEPTACLE UOC: AL6.....	1
13	PAFZZ	5330009468344	96906	MS52000-5	GASKET UOC: AL6.....	2
14	PAFZZ	5305010068953	96906	MS3213-27	SCREW, MACHINE UOC: AL6.....	6
15	PAFZZ	5305010577206	96906	MS3213-5	SCREW, MACHINE UOC: AL6.....	8
16	PAFZZ	5340011980230	19200	9365840	BRACKET, DOUBLE ANGLE UOC: AL6.....	1
17	PAFZA	5305010470340	96906	MS3213-12	SCREW, MACHINE UOC: AL6.....	2
18	PAFZZ	5305010068952	96906	MS3213-15	SCREW, MACHINE UOC: AL6.....	4
19	PAFZZ	6150013614734	19200	12934470	WIRING HARNESS UOC: AL6.....	1
20	PAFZZ	5310005843782	88044	AN960C4L	WASHER, FLAT UOC: AL6.....	8
21	PAFZZ	5310009390849	96906	MS21083C04	NUT, SELF-LOCKING, HEXAGON UOC: AL6.....	8
22	PAFZZ	5330008272813	96906	MS52000-9	GASKET UOC: AL6.....	1
23	PAFZZ	5330013967215	19200	12934478	GASKET UOC: AL6.....	1
24	PAFZZ	5310001670812	88044	AN960C10L	WASHER, FLAT UOC: AL6.....	13
25	PAFZZ	5310009338120	96906	MS35338-138	WASHER, LOCK UOC: AL6.....	4
26	PAFZZ	5305000593657	96906	MS51958-61	SCREW, MACHINE UOC: AL6.....	4
27	PAFZZ	5310008976145	96906	MS21083C4	NUT, SELF-LOCKING, HEXAGON UOC: AL6.....	5
28	PAFZZ	5310005432740	96906	MS35333-74	WASHER, LOCK UOC: AL6.....	6
29	PAFZZ	5950013493193	19200	12934465	TRANSFORMER, POWER UOC: AL6.....	1
30	PAFZZ	5305006853511	96906	MS35308-306	SCREW, CAP, HEXAGON HEAD UOC: AL6.....	5
31	PAFZZ	6150013765822	19200	12934473	CABLE ASSEMBLY, SPECIAL UOC: AL6.....	1
32	PAFZZ	5305002257773	96906	MS16996-22	SCREW, CAP, SOCKET HEAD UOC: AL6.....	4
33	PAFZZ	5310005319515	88044	AN960C416	WASHER, FLAT UOC: AL6.....	6
34	PAFZZ	5961013648045	19200	12934462	RECTIFIER SEMICONDUCTOR UOC: AL6.....	1
35	PBFZZ	5340013738829	19200	12934460	PLATE, MOUNTING UOC: AL6.....	1
36	XDFZZ		81349	MSA39TB4	MARKER STRIP, TERMINAL UOC: AL6.....	1
37	PAFZZ	5305000593663	96906	MS51958-67	SCREW, MACHINE UOC: AL6.....	9
38	PAFZZ	5310009261835	96906	MS21083C3	NUT, SELF-LOCKING, HEXAGON UOC: AL6.....	8
39	PAFZZ	5940009836099	81349	39TB4	TERMINAL BOARD UOC: AL6.....	1
40	XDFZZ		19200	12934474	DECAL UOC: AL6.....	1
41	PAFZZ	5940011584518	19200	9354183	COVER, TERMINAL BOARD UOC: AL6.....	2
42	PAFZZ	5940011584521	19200	9353945	TERMINAL, LUG UOC: AL6.....	1
43	PAFZZ	5310002091239	96906	MS35335-60	WASHER, LOCK UOC: AL6.....	1
44	PAFZZ	5310004776768	96906	MS35649-2384	NUT, PLAIN, HEXAGON UOC: AL6.....	4
45	PAFZZ	5310001670804	88044	AN960C616	WASHER, FLAT UOC : AL6.....	4
46	XDFZZ		96906	MS21322-58	CLAMP, LOOP UOC: AL6.....	4
47	XDFZZ		81349	M39018/04-0039	CAPACITOR, FIXED, ELECTROLYTIC UOC:..... AL6.....	2

END OF FIGURE



SECTION II.

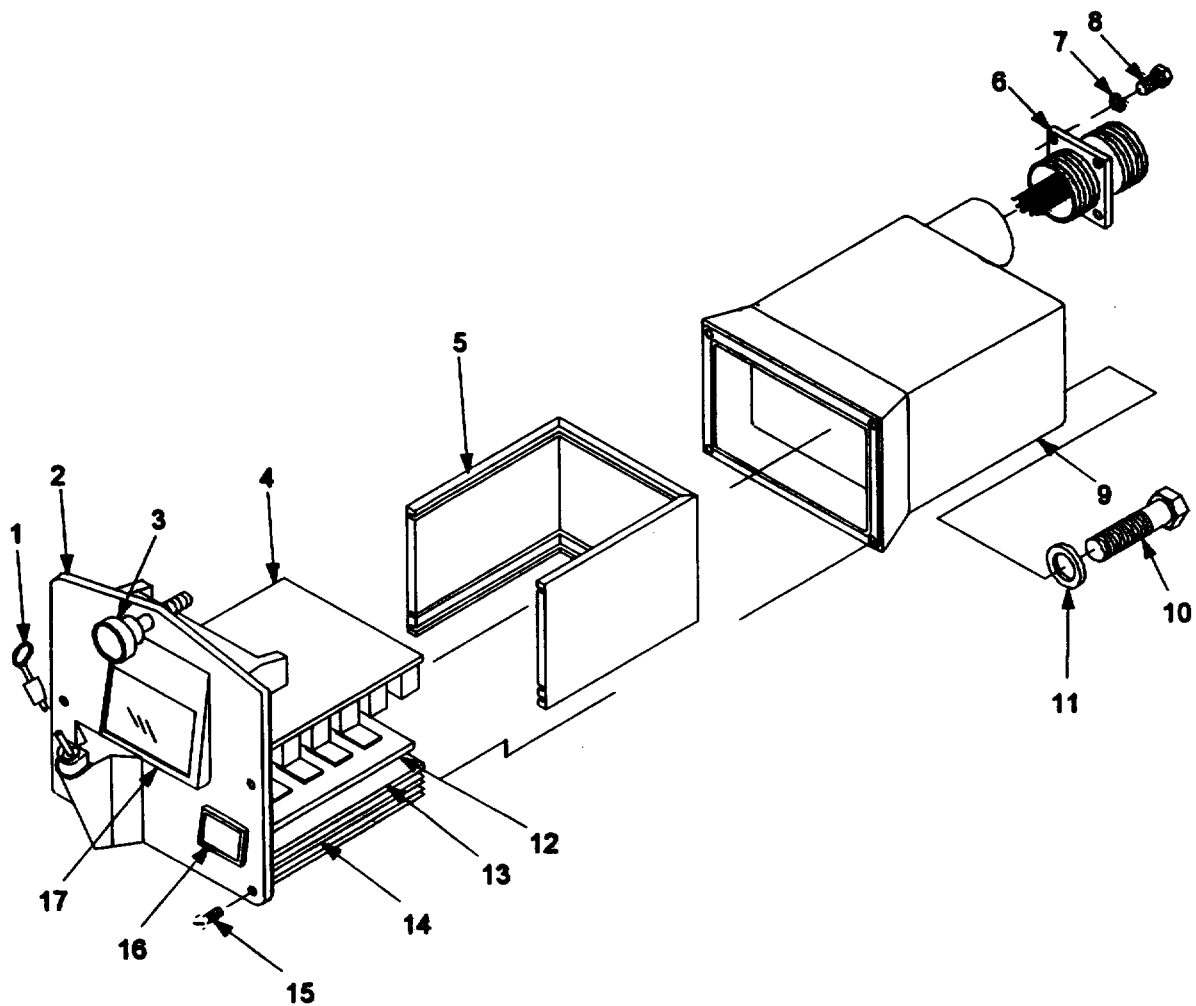


Figure 15. Receiver, Channel 11784801

**SECTION II**

**TM 9-6920-742-24P-5**

(1) ITEM NO.	(2) SMR CODE	(3) NSN	(4) CAGEC	(5) PART NUMBER	(6) DESCRIPTION AND USABLE ON CODE (UOC)	(7) QTY
GROUP 07 FIG. 15 RECEIVER, CHANNEL 11784801						
01	PAFZZ	5985012417565	19200	11784802	ANTENNA UOC: AL5 .....	1
02	XDDDD		19200	11784804	PANEL, CONTROL, TARGET UOC: AL5.....	1
03	PAFZZ	5305012351805	19200	11784837	THUMBSCREW UOC: AL5 .....	1
04	XDDDD		19200	11784814	CIRCUIT CARD ASSEMBLY UOC: AL5.....	1
05	XDDZZ		19200	11784817	HOLDER, ELECTRICAL CARD OUC: AL5 .....	1
06	XDDZZ		19200	9375750	CABLE ASSEMBLY, SPECIAL UOC: AL5 .....	1
07	XDDZZ		96906	MS35338-40	WASHER, LOCK UOC: AL5.....	4
08	XDDZZ		96906	MS35206-215	SCREW, MACHINE UOC: AL5 .....	4
09	XDDZZ		19200	9375742	COVER, RECEIVER UOC: AL5 .....	1
10	PAFZZ	6685013651407	19200	12950861	INDICATOR, HUMIDITY, UOC: AL5 .....	1
11	PAFZZ	5325001850012	96906	MS35489-35	GROMMET, NONMETALLIC UOC: AL5 .....	1
12	XDDDD		19200	11784808	CIRCUIT CARD ASSEMBLY UOC: AL5.....	1
13	XDDZZ		19200	11784811	CIRCUIT CARD ASSEMBLY UOC: AL5.....	1
14	XDDZZ		19200	937572	PAD, PROTECTION UOC: AL5 .....	2
15	XDDZZ		19200	11784575	SCREW, MACHINE UOC: AL5 .....	4
16	XDDZZ		19200	11784442	SIGN UOC: AL5 .....	1
17	XDDZZ		19200	11784443	SIGN UOC: AL5 .....	1

END OF FIGURE

SECTION II.

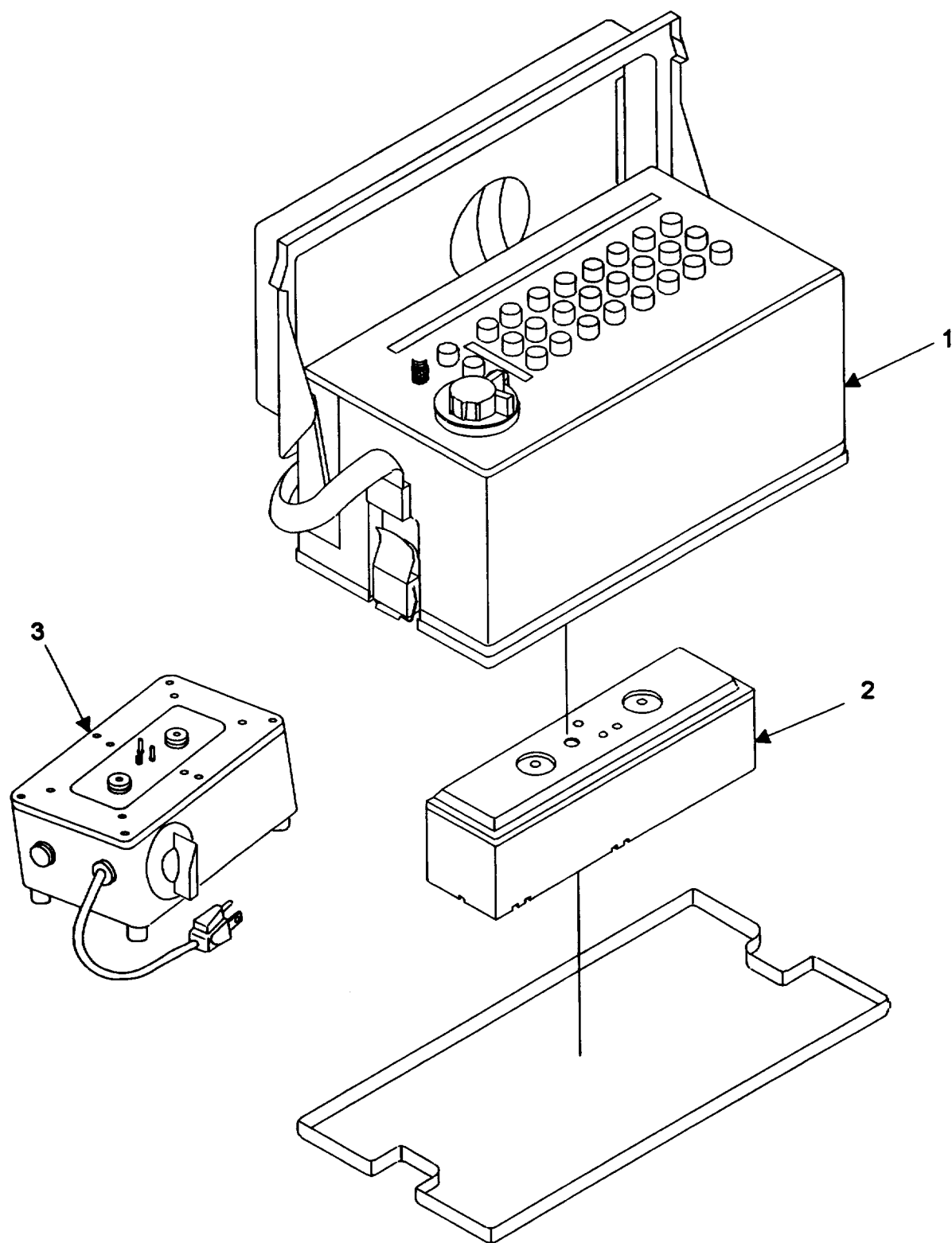


Figure 16. Transmitter, Radio 11784700

**SECTION II**

**TM 9-6920-742-24P-5**

(1) ITEM NO.	(2) SMR CODE	(3) NSN	(4) CAGEC	(5) PART NUMBER	(6) DESCRIPTION AND USABLE ON CODE (UOC)	(7) QTY
GROUP 08 FIG. 16 TRANSMITTER, RADIO 11784700						
01	PFODD	6920012357564	19200	11784701	TRANSMITTER SEE FIG.. 17 FOR .....	1
02	PAOBZ	6135012416115	19200	11784703	BATTERY ASSEMBLY UOC: AL5 .....	1
03	PBOZZ	6130013507763	19200	9356098	CHARGER, BATTERY UOC: AL5 .....	1

END OF FIGURE

SECTION II.

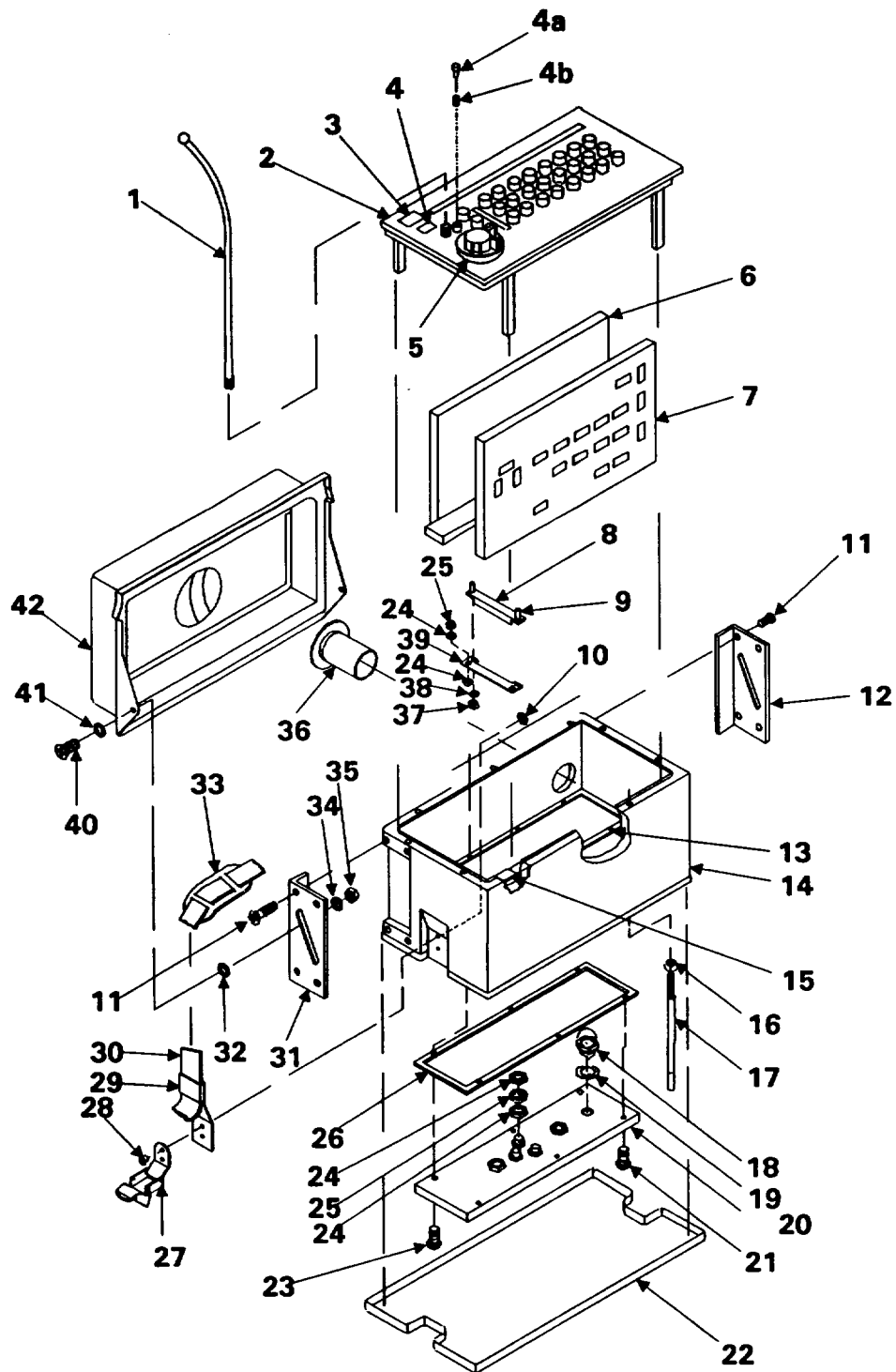


Figure 17. Transmitter 11784701

## SECTION II

TM 9-6920-742-24P-5

(1) ITEM NO.	(2) SMR CODE	(3) NSN	(4) CAGEC	(5) PART NUMBER	(6) DESCRIPTION AND USABLE ON CODE (UOC)	(7) QTY
GROUP 0802 FIG. 17 TRANSMITTER 11784701						
01	PAFZZ	5985012360263	19200	11784704	ANTENNA UOC: AL5.....	1
02	XDDDD		19200	11784718	PANEL ASSEMBLY UOC: AL5.....	1
03	XDFZZ		19200	11784748	PLATE, IDENTIFICATION UOC: AL5.....	1
04	XDFZZ		19200	9360588	SIGN UOC: AL5.....	1
04A	PAFZZ	6210012410427	19200	11784751	LENS, LAMP UOC: AL5.....	1
04B	PAFZZ	6240012417563	19200	11784752	LAMP UOC: AL5.....	1
05	XDFZZ		19200	11784702-1	KNOB, SELECTOR UOC: AL5.....	1
05	XDFZZ		19200	11784702-2	KNOB, SELECTOR UOC: AL5.....	1
05	XDFZZ		19200	11784702-3	KNOB, SELECTOR UOC: AL5.....	1
05	XDFZZ		19200	11784702-4	KNOB, SELECTOR UOC: AL5.....	1
05	XDFZZ		19200	11784702-5	KNOB, SELECTOR UOC: AL5.....	1
05	XDFZZ		19200	11784702-6	KNOB, SELECTOR UOC: AL5.....	1
05	XDFZZ		19200	11784702-7	KNOB, SELECTOR UOC: AL5.....	1
05	XDFZZ		19200	11784702-8	KNOB, SELECTOR UOC: AL5.....	1
05	XDFZZ		19200	11784702-9	KNOB, SELECTOR UOC: AL5.....	1
05	XDFZZ		19200	11784702-10	KNOB, SELECTOR UOC: AL5.....	1
06	XDDZZ		19200	11784714	CIRCUIT CARD ASSEMBLY UOC: AL5.....	1
07	XDDDD		19200	11784711	CIRCUIT CARD ASSEMBLY UOC: AL5.....	1
08	XDDZZ		19200	11784710	CONTACT ASSEMBLY, ELECTRICAL UOC: AL5.....	1
09	XDDZZ		19200	11784726	PIN, SHOULDER, HEADLESS UOC: AL5.....	2
10	XDDZZ		19200	11784569-4	WASHER, FLAT UOC: AL5.....	4
11	XDFZZ		19200	11784574-2	SCREW, MACHINE UOC: AL5.....	8
12	XDFZZ		19200	11784728-1	BRACKET, ANGLE UOC: AL5.....	1
13	XDDZZ		19200	11784729	INSULATION UOC: AL5.....	2
14	XDDZZ		19200	12598337	CASE, FOAMED UOC: AL5.....	1
15	XDDZZ		19200	11784789	RUBBER, CUSHION UOC: AL5.....	1
16	XDDZZ		19200	11784849-1	O-RING UOC: AL5.....	10
17	XDDZZ		19200	11784727	SCREW, SHOULDER UOC: AL5.....	10
18	XDDZZ		19200	11784708	VALVE UOC: AL5.....	1
19	XDDZZ		19200	11785164	GASKET UOC: AL5.....	1
20	XDDZZ		19200	11784717	PLATE, BATTERY UOC: AL5.....	1
21	XDDZZ		19200	11784574-4	SCREW, MACHINE UOC: AL5.....	6
22	PAFZZ	6920012391563	19200	11784706	PLATE, BOTTOM UOC: AL5.....	1
23	XDDZZ		19200	11784555-6	SCREW, MACHINE UOC: AL5.....	2
24	XDDZZ		19200	11784568-2	NUT, PLAIN, HEXAGON UOC: AL5.....	10
25	XDDZZ		19200	11784570-2	WASHER, SPRING TENSION UOC: AL5.....	4
26	XDDZZ		19200	11784744	GASKET UOC: AL5.....	1
27	XDDZZ		19200	11784790	CATCH, PULL DOWN UOC: AL5.....	2
28	XDDZZ		19200	11784567-2	RIVET, SOLID UOC: AL5.....	4
29	XDDZZ		19200	11784724	LOOP, STRAP FASTENER UOC: AL5.....	2
30	XDDZZ		19200	11784745	STRAP, LEATHER UOC: AL5.....	1
31	XDFZZ		19200	11784728-2	BRACKET, ANGLE UOC: AL5.....	1
32	XDFZZ		19200	11784569-2	WASHER, FLAT UOC: AL5.....	2
33	XDDZZ		19200	11784746	PAD, CUSHIONING UOC: AL5.....	1
34	XDFZZ		19200	11784730	SPACER, SLEEVE UOC: AL5.....	2
35	XDFZZ		19200	11784578	NT, SELF-LOCKING, HEXAGON UOC: AL5.....	2
36	PAFZZ	6685013651408	19200	12950862	INDICATOR, HUMIDITY, UOC: AL5.....	1
37	XDDZZ		19200	11784568-1	NUT, PLAIN, HEXAGON UOC: AL5.....	2

**SECTION II**

**TM 9-6920-742-24P-5**

(1) ITEM NO.	(2) SMR CODE	(3) NSN	(4) CAGEC	(5) PART NUMBER	(6) DESCRIPTION AND USABLE ON CODE (UOC)	(7) QTY
38	XDDZZ		19200	1178470-1	WASHER, SPRING TENSION UOC: AL5 .....	2
39	XDDZZ		19200	11784725	BRACKET UOC: AL5 .....	1
40	XDFZZ		19200	11784574-5	SCREW, MACHINE UOC: AL5 .....	2
41	PAFZZ	5310009960133	96906	MS27129-4	WASHER, FINISHING UOC: AL5 .....	2
42	XDFZZ		19200	11784707	COVER, TOP UOC: AL5 .....	1

END OF FIGURE

**SECTION II**

**TM 9-6920-742-24P-5**

(1) ITEM NO.	(2) SMR CODE	(3) NSN	(4) CAGEC	(5) PART NUMBER	(6) DESCRIPTION AND USABLE ON CODE (UOC)	(7) QTY
GROUP 99 FIG. BULK BULK MATERIALS						
1	PAFZZ	6145013738788	81349	C0-02MDE(2/20)SJ 0278	CABLE, POWER, ELECTRI .....	1
2	PCOZZ	5970008122969	81349	M23053/5-104-0	INSULATION SLEEVING .....	1
3	PCFZZ	5970008122967	81349	M23053/5-108-0	INSULATION SLEEVING .....	1
4	PCFZZ	5970008151295	81349	M23053/5-106-0	INSULATION SLEEVING .....	1
5	PCFZZ	5970009541622	81349	M23053/5-105-0	INSULATION SLEEVING .....	1
6	PCOZZ	5970007872325	81349	M23053/5-104-4	INSULATION SLEEVING .....	1
7	PCFZZ	5970000573545	81349	M23053/5-109-4	INSULATION SLEEVING .....	1
8	PAFZZ	5970008370647	81349	MIL-I-22129	INSULATION SLEEVING .....	1
9	PCFZZ	5970007670515	81349	M23053/5-205-C	INSULATION SLEEVING .....	1
10	PAFZZ	6145008397432	81348	QQW343S20SIT	WIRE, ELECTRICAL .....	1
11	PAFZA	6145009498006	81349	M22759/11-22-9	WIRE, ELECTRICAL .....	1
12	PAFZA	6145013321528	81349	M16878/12BHE6	WIRE, ELECTRICAL .....	1
13	PAFZA	6145009394960	81349	M22759/11-20-5	WIRE, ELECTRICAL .....	1

END OF FIGURE

**BULK-1**



## CROSS-REFERENCE INDEXES

NATIONAL STOCK NUMBER INDEX					
STOCK NUMBER	FIG.	ITEM	STOCK NUMBER	FIG.	ITEM
5310-00-006-8291	08	46	5310-00-543-2410	02	48
5910-00-010-8717	06	84	5310-00-543-2740	14	28
5315-00-012-0123	02	36	5310-00-550-1130	02	44
5310-00-014-5850	02	07		06	32
	08	23	5940-00-557-1629	11	05
5310-00-045-3296	02	08	5310-00-559-0070	06	22
	03	03		08	12
	08	22	5310-00-576-5752	06	12
5310-00-045-3299	02	21	5310-00-579-0079	02	56
	08	43		06	27
5310-00-045-5207	06	13	5310-00-582-5965	02	64
5970-00-057-3545	BULK	7		08	02
5305-00-059-3657	14	26	5330-00-585-7723	08	39
5305-00-059-3663	14	37	5310-00-595-6425	14	20
5305-00-068-0502	02	65	5935-00-599-9604	04	04
	08	28	5355-00-616-9604	06	37
5975-00-074-2072	02	04	5310-00-637-9541	02	52
	06	91	5310-00-638-9857	14	03
	08	08	5330-00-641-4338	06	78
5310-00-081-4219	02	60	5910-00-649-4142	06	08
	08	19	5305-00-655-9246	06	38
5305-00-088-9044	03	04	4730-00-679-9280	08	36
5905-00-104-5755	06	87	5330-00-684-3420	06	69
5910-00-113-5515	06	79	5305-00-685-3511	14	30
5940-00-113-9828	06	10	5365-00-726-2038	06	71
5940-00-143-4780	06	14	5975-00-727-5153	02	46
5305-00-163-6561	02	49		05	06
5310-00-167-0804	14	45		06	82
5310-00-167-0812	14	24		11	03
5310-00-178-8631	14	08	5970-00-767-0515	BULK	9
5325-00-185-0012	15	11	5970-00-787-2325	BULK	6
5310-00-193-7577	06	05	5940-00-804-0365	06	80
	08	15	5310-00-809-4058	02	45
5920-00-199-4019	08	38		08	03
5305-00-206-2508	06	11	5310-00-809-8544	06	15
5310-00-209-0790	12	07	5310-00-809-8546	02	40
5310-00-209-1239	14	43	5310-00-811-3494	02	27
5340-00-216-8352	06	59	5970-00-812-2967	BULK	3
5305-00-225-7773	14	32	5970-00-812-2969	BULK	2
5306-00-225-8499	08	48	5970-00-815-1295	BULK	4
5306-00-226-4825	02	59	5310-00-823-8804	02	30
	08	33	5330-00-827-2813	14	22
5310-00-245-3615	14	07	5970-00-837-0647	BULK	8
5340-00-282-7965	06	56	6145-00-839-7432	BULK	10
4730-00-289-5484	02	33	5310-00-880-7744	08	17
5310-00-407-9566	02	16	5305-00-889-2997	08	14
	08	18	5305-00-889-2999	06	57
5310-00-477-6768	14	44	5310-00-897-6145	14	27
5315-00-531-7881	02	63	5930-00-901-4275	06	40
5310-00-531-9515	14	33	5961-00-914-9740	06	17

## CROSS-REFERENCE INDEXES

NATIONAL STOCK NUMBER INDEX					
STOCK NUMBER	FIG.	ITEM	STOCK NUMBER	FIG.	ITEM
5310-00-925-9646	14	04	5940-01-135-7079	11	08
5310-00-926-1835	14	38	5940-01-158-4518	14	41
5310-00-933-8120	14	25	5940-01-158-4521	14	42
5310-00-934-9739	06	06	7690-01-163-1560	14	02
5310-00-934-9747	06	28	5935-01-171-1966	04	05
5310-00-934-9751	08	21		09	05
5310-00-934-9757	06	16	5340-01-182-7616	02	25
5310-00-939-0849	14	21	6920-01-195-1749	02	35
5310-00-939-0850	14	10	6240-01-195-1750	01	09
6145-00-939-4960	BULK	13	6150-01-195-1754	10	03
5330-00-946-8344	06	02	5935-01-195-1761	06	35
	08	16	5930-01-195-3539	05	07
	14	13	5340-01-198-0230	14	16
6145-00-949-8006	BULK	11	6920-01-203-7820	02	14
5310-00-950-1310	06	46	5999-01-204-4174	06	72
5970-00-954-1622	BULK	5	5999-01-204-4175	06	43
5330-00-968-1753	06	63	5999-01-204-4176	06	51
5305-00-978-9395	02	51	5935-01-206-0218	06	62
5940-00-983-6099	14	39	5910-01-207-3566	06	09
5305-00-983-6730	06	54	5365-01-207-5755	06	49
5305-00-983-7428	02	39		08	04
5305-00-983-8084	08	01	5935-01-207-8376	05	01
5305-00-984-4978	06	47	5935-01-207-8380	06	61
5305-00-984-4988	02	55	5945-01-207-9434	06	24
5305-00-984-6189	02	22	5935-01-208-1990	06	73
	06	52	5930-01-208-2275	06	65
5305-00-984-6191	08	13	5945-01-209-2983	06	20
5305-00-984-6193	02	24	5340-01-209-7818	06	23
5305-00-984-6194	06	07	5930-01-209-8516	06	66
	08	42	7690-01-209-8655	06	31
5305-00-988-1723	06	33	5310-01-210-1588	02	34
5305-00-988-1726	02	43	5310-01-210-1605	06	44
5305-00-990-6444	02	09	5330-01-211-1342	06	48
5310-00-996-0133	17	41	5305-01-211-1377	06	34
5305-01-006-8952	14	18	6135-01-211-6911	12	06
5305-01-006-8953	14	14	5330-01-213-2421	06	39
6140-01-032-1326	12	02	5365-01-213-2426	06	45
5935-01-035-5156	06	04	6145-01-214-4016	06	74
5330-01-046-3300	08	35	6920-01-214-6249	06	70
5305-01-047-0340	14	17	5365-01-214-6400	06	53
5935-01-050-6586	09	04	6210-01-214-6430	06	67
5340-01-054-8824	02	58	5999-01-216-2560	06	41
5306-01-056-2942	02	17	9390-01-216-9346	06	58
5305-01-057-7206	14	15	5365-01-217-2088	06	68
5306-01-075-8519	02	17A	6850-01-218-0679	06	76
5940-01-079-1647	05	05	6920-01-224-6370	06	75
5310-01-088-2490	12	03	5340-01-235-0233	02	29
5935-01-094-9306	06	60	6920-01-235-0234	02	26
5935-01-105-1187	06	03	5995-01-235-0235	02	11
5340-01-117-7702	06	29	5995-01-235-0236	02	12

## CROSS-REFERENCE INDEXES

NATIONAL STOCK NUMBER INDEX					
STOCK NUMBER	FIG.	ITEM	STOCK NUMBER	FIG.	ITEM
6920-01-235-0237	02	18	6145-01-239-6988	01	06
6920-01-235-0238	02	15	6210-01-241-0427	17	04A
6920-01-235-0240	03	06	5340-01-241-0430	02	02
6920-01-235-0241	03	05	6920-01-241-6111	08	10
3040-01-235-0242	03	02	6135-01-241-6115	16	02
6920-01-235-0244	02	03	6240-01-241-7563	17	04B
5310-01-235-0245	02	28	5985-01-241-7565	15	01
6920-01-235-0246	02	41	6140-01-262-2272	12	02
6920-01-235-0247	02	42	5930-01-303-1296	08	24
5340-01-235-0248	02	47	5310-01-303-4701	02	57
5340-01-235-0249	02	54	6240-01-305-0906	10	02
3130-01-235-0295	02	37	6130-01-322-0258	13	02
3130-01-235-0296	02	50	6145-01-332-1528	BULK	12
3040-01-235-1760	02	32	4320-01-342-2401	08	29
4720-01-235-1768	02	62	5925-01-349-2227	14	05
6920-01-235-1769	08	27	5950-01-349-3193	14	29
4720-01-235-1770	08	32	6920-01-350-7760	01	04
4720-01-235-1771	08	31	6130-01-350-7763	16	03
5340-01-235-1772	08	34	5310-01-352-9577	14	11
5305-01-235-1805	15	03	6150-01-354-4394	13	01
5330-01-235-1875	08	06	6150-01-354-4395	13	03
5305-01-235-1898	06	21	6150-01-361-4734	14	19
5310-01-235-1922	08	41	5961-01-364-8045	14	34
5340-01-235-1960	08	49	6685-01-365-1407	15	10
6150-01-235-1974	08	20	6685-01-365-1408	17	36
6150-01-235-1975	08	45	5935-01-367-4430	12	04
6150-01-235-1976	08	26	6150-01-369-0285	12	05
6920-01-235-7564	16	01	5306-01-373-0397	08	25
5935-01-235-7568	06	77	6145-01-373-8788	BULK	1
5985-01-236-0263	17	01	5340-01-373-8829	14	35
5340-01-236-4105	06	26	5998-01-374-2340	06	50
6130-01-236-7454	1	10	4730-01-374-7803	08	30
5935-01-238-7770	06	55	6105-01-375-3690	02	20
9390-01-238-8184	02	23	5940-01-375-6597	06	89
5305-01-238-9870	03	01	5935-01-380-8256	11	01
5330-01-238-9871	02	53	6145-01-385-2711	04	01
6150-01-238-9872	01	07		05	03
5305-01-238-9876	02	31	5895-01-394-1714	01	05
5340-01-238-9879	02	01	5340-01-396-3952	03	07
6150-01-239-1547	02	13	5330-01-396-7215	14	23
6920-01-239-1548	02	61			
5935-01-239-1549	08	44			
	14	12			
5935-01-239-1550	08	40			
	14	09			
5920-01-239-1551	08	37			
5995-01-239-1552	08	09			
5935-01-239-1555	06	36			
6920-01-239-1563	17	22			
5999-01-239-1611	08	07			

## CROSS-REFERENCE INDEXES

CAGEC	PART NUMBER	PART NUMBER INDEX		FIG.	ITEM
			STOCK NUMBER		
88044	AN960C10L		5310-00-167-0812	14	24
88044	AN960C4L		5310-00-595-6425	14	20
88044	AN960C416		5310-00-531-9515	14	33
88044	AN960C6L		5310-00-638-9857	14	03
88044	AN960C616		5310-00-167-0804	14	45
65150	BT01BRA00			07	01
65150	BT01CT000			07	03
65150	BT01PK001			07	18
65150	BT01PRA00			07	06
65150	BT01PT000			07	02
80204	B1821BH031C075N	5306-00-226-4825		02	59
				08	33
81349	C0-02MDE(2/20)SJ 0278			11	04
		6145-01-373-8788		BULK	1
08163	C31R-4	6140-01-032-1326		12	02
81349	F09B250V6-1/4A	5920-00-199-4019		08	38
81349	JAN1N4246	5961-00-914-9740		06	17
81349	MIL-I-22129	5970-00-837-0647		BULK	8
81349	MILI22129			06	83
81349	MSA39TB4			14	36
96906	MS15795-908	5310-00-045-5207		06	13
96906	MS16996-22	5305-00-225-7773		14	32
96906	MS16997-100	5305-00-978-9395		02	51
96906	MS16997-60	5305-00-983-8084		08	01
96906	MS16998-26	5305-00-983-7428		02	39
96906	MS21044N08	5310-00-811-3494		02	27
96906	MS21083C04	5310-00-939-0849		14	21
96906	MS21083C06	5310-00-925-9646		14	04
96906	MS21083C08	5310-00-939-0850		14	10
96906	MS21083C3	5310-00-926-1835		14	38
96906	MS21083C4	5310-00-897-6145		14	27
96906	MS21322-58			14	46
96906	MS24665-355	5315-00-012-0123		02	36
96906	MS25036-108	5940-00-143-4780		06	14
96906	MS25036-146	5940-00-804-0365		06	80
96906	MS25036-148	5940-00-113-9828		06	10
96906	MS25036-149	5940-00-557-1629		11	05
96906	MS25307-272	5930-00-901-4275		06	40
96906	MS27129-4	5310-00-996-0133		17	41
96906	MS27130-S32	5310-00-006-8291		08	46
96906	MS27183-10	5310-00-809-4058		02	45
				08	03
96906	M527183-12	5310-00-081-4219		02	60
				08	19
96906	MS27183-4	5310-00-950-1310		06	46
96906	MS27183-42	5310-00-014-5850		02	07
				08	23
96906	MS27183-7	5310-00-809-8544		06	15
96906	MS27183-8	5310-00-809-8546		02	40
96906	MS27183-9	5310-00-823-8804		02	30

**CROSS-REFERENCE INDEXES  
PART NUMBER INDEX**

<b>CAGEC</b>	<b>PART NUMBER</b>	<b>STOCK NUMBER</b>	<b>FIG.</b>	<b>ITEM</b>
96906	MS28775-013	5330-00-684-3420	06	69
96906	MS28775-020	5330-00-585-7723	08	39
96906	MS3213-12	5305-01-047-0340	14	17
96906	MS3213-15	5305-01-006-8952	14	18
96906	MS3213-27	5305-01-006-8953	14	14
96906	MS3213-5	5305-01-057-7206	14	15
96906	MS3367-1-9	5975-00-074-2072	02	04
			06	91
			08	08
96906	MS3367-4-9	5975-00-727-5153	02	46
			05	06
			06	82
			11	03
96906	MS3420-8		11	02
96906	MS3452W16S-1S	5935-01-105-1187	06	03
96906	MS3452W16S1P	5935-01-035-5156	06	04
96906	MS3456W16S-1P	5935-01-050-6586	09	04
96906	MS3456W16S1S	5935-00-599-9604	04	04
96906	MS35206-215	5305-00-889-2997	08	14
			15	08
96906	MS35206-217	5305-00-889-2999	06	57
96906	MS35206-218	5305-00-983-6730	06	54
96906	MS35206-221	5305-00-984-4978	06	47
96906	MS35206-228	5305-00-984-4988	02	55
96906	MS35206-241	5305-00-984-6189	02	22
			06	52
96906	MS35206-243	5305-00-984-6191	08	13
96906	MS35206-245	5305-00-984-6193	02	24
96906	MS35206-246	5305-00-984-6194	06	07
			08	42
96906	MS35206-279	5305-00-988-1723	06	33
96906	MS35206-282	5305-00-988-1726	02	43
96906	MS35207-260	5305-00-088-9044	03	04
96906	MS35207-261	5305-00-990-6444	02	09
96906	MS35215-53	5305-00-206-2508	06	11
96906	MS35308-306	5305-00-685-3511	14	30
96906	MS35333-36	5310-00-193-7577	06	05
			08	15
96906	MS35333-37	5310-00-579-0079	02	56
			06	27
96906	MS35333-38	5310-00-559-0070	06	22
			08	12
96906	MS35333-39	5310-00-576-5752	06	12
96906	MS35333-40	5310-00-550-1130	02	44
			06	32
96906	MS35333-74	5310-00-543-2740	14	28
96906	MS35333-75	5310-00-178-8631	14	08
96906	MS35335-60	5310-00-209-1239	14	43
96906	MS35335-63	5310-00-209-0790	12	07
96906	MS35338-138	5310-00-933-8120	14	25
96906	MS35338-40	5310-00-543-2410	02	48

**CROSS-REFERENCE INDEXES  
PART NUMBER INDEX**

CAGEC	PART NUMBER	STOCK NUMBER	FIG.	ITEM
96906	MS35338-40		15	07
96906	MS35338-42	5310-00-045-3299	02	21
			08	43
96906	MS35338-43	5310-00-045-3296	02	08
			03	03
			08	22
96906	MS35338-44	5310-00-582-5965	02	64
			08	02
96906	MS35338-45	5310-00-407-9566	02	16
			08	18
96906	MS35338-46	5310-00-637-9541	02	52
96906	MS35425-74	5310-01-088-2490	12	03
96906	MS35489-35	5325-00-185-0012	15	11
96906	MS35649-2314	5310-00-245-3615	14	07
96906	MS35649-2384	5310-00-477-6768	14	44
96906	MS35649-242	5310-00-934-9739	06	06
96906	MS35649-262	5310-00-934-9747	06	28
96906	MS35649-282	5310-00-934-9757	06	16
96906	MS35650-302	5310-00-934-9751	08	21
96906	MS39086-251	5315-00-531-7881	02	63
96906	MS51021-10	5305-00-655-9246	06	38
96906	MS51412-1	5310-01-303-4701	02	57
96906	MS51500A4-4	4730-00-289-5484	02	33
96906	MS51520A4	4730-00-679-9280	08	36
96906	MS51861-14C	5305-00-163-6561	02	49
96906	MS51958-61	5305-00-059-3657	14	26
96906	MS51958-67	5305-00-059-3663	14	37
96906	MS51967-5	5310-00-880-7744	08	17
96906	MS52000-4	5330-00-641-4338	06	78
96906	MS52000-5	5330-00-946-8344	06	02
			08	16
			14	13
96906	MS52000-7	5330-00-968-1753	06	63
96906	MS52000-9	5330-00-827-2813	14	22
96906	MS90725-34	5306-00-225-8499	08	48
96906	MS90725-35	5306-01-056-2942	02	17
96906	MS90725-36	5306-01-075-8519	02	17A
96906	MS90725-6	5305-00-068-0502	02	65
			08	28
96906	MS91528-1P2B	5355-00-616-9604	06	37
96906	MS9783-24	5306-01-373-0397	08	25
81349	M16878/12BHE6		06	86
		6145-01-332-1528	BULK	12
81349	M22759/11-2-9		06	81
81349	M22759/11-20-5		11	09
		6145-00-939-4960	BULK	13
81349	M22759/11-22-9	6145-00-949-8006	BULK	11
81349	M23053/5-104-0		04	02
			05	08
			06	85
			09	02

**CROSS-REFERENCE INDEXES  
PART NUMBER INDEX**

<b>CAGEC</b>	<b>PART NUMBER</b>	<b>STOCK NUMBER</b>	<b>FIG.</b>	<b>ITEM</b>
81349	M23053/5-104-0	5970-00-812-2969	BULK	2
81349	M23053/5-104-4		11	06
		5970-00-787-2325	BULK	6
81349	M23053/5-105-0		06	88
		5970-00-954-1622	BULK	5
81349	M23053/5-106-0		05	02
		5970-00-815-1295	BULK	4
81349	M23053/5-108-0		04	03
			05	04
			06	90
			09	03
		5970-00-812-2967	BULK	3
81349	M23053/5-109-4		11	07
		5970-00-057-3545	BULK	7
81349	M23053/5-205-C		06	18
		5970-00-767-0515	BULK	9
16764	M27MF	6140-01-262-2272	12	02
81349	M39014/01-1333	5910-00-113-5515	06	79
81349	M39014/01-1593	5910-00-010-8717	06	84
81349	M39018/04-0039		14	47
81349	M7928/5-3	5940-01-079-1647	05	05
81349	M83461/1-012	5330-01-046-3300	08	35
81349	M83519/1-5	5940-01-135-7079	11	08
81349	M85049/52-1-16W	5935-01-171-1966	04	05
			09	05
80205	NAS1149CN816R	5310-01-352-9577	14	11
65150	NW03GL000		07	07
65150	NW04GR000		07	08
81348	QQW343S20S1T		06	25
		6145-00-839-7432	BULK	10
81349	RCR20G100JS	5905-00-104-5755	06	87
19200	11784442		15	16
19200	11784443		15	17
19200	11784473	6240-01-305-0906	10	02
19200	11784475	6240-01-195-1750	01	09
19200	11784476	6150-01-195-1754	10	03
19200	11784485	6130-01-236-7454	1	10
19200	11784502-1		01	03
19200	11784502-2		01	03
19200	11784504	6920-01-203-7820	02	14
19200	11784506		02	10
19200	11784508	5995-01-235-0235	02	11
19200	11784509	5995-01-235-0236	02	12
19200	11784510	6150-01-239-1547	02	13
19200	11784511	5930-01-195-3539	05	07
19200	11784514	5999-01-239-1611	08	07
19200	11784521	3130-01-235-0295	02	37
19200	11784522	3130-01-235-0296	02	50
19200	11784523	5999-01-204-4175	06	43
19200	11784526	5999-01-204-4176	06	51
19200	11784529	5930-01-209-8516	06	66

**CROSS-REFERENCE INDEXES  
PART NUMBER INDEX**

<b>CAGEC</b>	<b>PART NUMBER</b>	<b>STOCK NUMBER</b>	<b>FIG.</b>	<b>ITEM</b>
19200	11784530	5930-01-208-2275	06	65
19200	11784531	5999-01-204-4174	06	72
19200	11784538		02	06
19200	11784539		02	05
19200	11784542		06	64
19200	11784545	5340-01-182-7616	02	25
19200	11784548	5310-01-235-0245	02	28
19200	11784550	3040-01-235-0242	03	02
19200	11784551	5340-01-396-3952	03	07
19200	11784552	6920-01-235-0240	03	06
19200	11784553	6920-01-235-0241	03	05
19200	11784554	5305-01-238-9870	03	01
19200	11784555-4	5305-01-235-1898	06	21
19200	11784555-6		17	23
19200	11784559-2		06	19
19200	11784567-2		17	28
19200	11784568-1		17	37
19200	11784568-2		17	24
19200	11784569-2		17	32
19200	11784569-4		17	10
19200	11784570-1		17	38
19200	11784570-2		17	25
19200	11784572-2	5305-01-238-9876	02	31
19200	11784574-2		17	11
19200	11784574-4		17	21
19200	11784574-5		17	40
19200	11784575		15	15
19200	11784578		17	35
19200	11784605	6920-01-235-0238	02	15
19200	11784606	5340-01-238-9879	02	01
19200	11784607	6920-01-235-0237	02	18
19200	11784608	6920-01-235-0244	02	03
19200	11784611	6920-01-235-0234	02	26
19200	11784613	5330-01-238-9871	02	53
19200	11784617	6920-01-195-1749	02	35
19200	11784618	5310-01-210-1588	02	34
19200	11784619-1	3040-01-235-1760	02	32
19200	11784621		02	38
19200	11784622	6920-01-235-0246	02	41
19200	11784623	6920-01-235-0247	02	42
19200	11784624	5340-01-235-0249	02	54
19200	11784625	5340-01-235-0248	02	47
19200	11784626		02	19
19200	11784627	6105-01-375-3690	02	20
19200	11784628	5365-01-213-2426	06	45
19200	11784629	5330-01-213-2421	06	59
19200	11784630	5935-01-239-1555	06	36
19200	11784631	5935-01-195-1761	06	35
19200	11784632		06	30
19200	11784633		06	01
19200	11784634	5330-01-211-1342	06	48



**CROSS-REFERENCE INDEXES  
PART NUMBER INDEX**

<b>CAGEC</b>	<b>PART NUMBER</b>	<b>STOCK NUMBER</b>	<b>FIG.</b>	<b>ITEM</b>
19200	11784635	5999-01-216-2560	06	41
19200	11784636	7690-01-209-8655	06	31
19200	11784637	6920-01-214-6249	06	70
19200	11784638	5305-01-211-1377	06	34
19200	11784639	5310-01-210-1605	06	44
19200	11784640	6210-01-214-6430	06	67
19200	11784641	5340-01-209-7818	06	23
19200	11784644-1	5365-01-214-6400	06	53
19200	11784644-2	5365-01-217-2088	06	68
19200	11784644-3	5365-00-726-2038	06	71
19200	11784645	5365-01-207-5755	06	49
			08	04
19200	11784646	9390-01-216-9346	06	58
19200	11784647	6850-01-218-0679	06	76
19200	11784648	5945-01-207-9434	06	24
19200	11784649	5945-01-209-2983	06	20
19200	11784657-1	5935-01-208-1990	06	73
19200	11784657-2	6920-01-224-6370	06	75
19200	11784658-1	5935-01-238-7770	06	55
19200	11784658-2		06	42
19200	11784661	5935-01-235-7568	06	77
19200	11784662	5935-01-207-8376	05	01
19200	11784663	5935-01-094-9306	06	60
19200	11784665	5935-01-207-8380	06	61
19200	11784666	5935-01-380-8256	11	01
19200	11784669-1	5340-00-282-7965	06	56
19200	11784669-2	5340-01-054-8824	02	58
19200	11784669-3	5340-01-236-4105	06	26
19200	11784669-4	5340-01-117-7702	06	29
19200	11784669-5	5340-00-216-8352	06	59
19200	11784670	5910-01-207-3566	06	09
19200	11784671	5910-00-649-4142	06	08
19200	11784700		01	01
19200	11784701	6920-01-235-7564	16	01
19200	11784702-1		17	05
19200	11784702-10		17	05
19200	11784702-2		17	05
19200	11784702-3		17	05
19200	11784702-4		17	05
19200	11784702-5		17	05
19200	11784702-6		17	05
19200	11784702-7		17	05
19200	11784702-8		17	05
19200	11784702-9		17	05
19200	11784703	6135-01-241-6115	16	02
19200	11784704	5985-01-236-0263	17	01
19200	11784706	6920-01-239-1563	17	22
19200	11784707		17	42
19200	11784708		17	18
19200	11784710		17	08
19200	11784711		17	07

**CROSS-REFERENCE INDEXES  
PART NUMBER INDEX**

<b>CAGEC</b>	<b>PART NUMBER</b>	<b>STOCK NUMBER</b>	<b>FIG.</b>	<b>ITEM</b>
19200	11784714		17	06
19200	11784717		17	20
19200	11784718		17	02
19200	11784724		17	29
19200	11784725		17	39
19200	11784726		17	09
19200	11784727		17	17
19200	11784728-1		17	12
19200	11784728-2		17	31
19200	11784729		17	13
19200	11784730		17	34
19200	11784744		17	26
19200	11784745		17	30
19200	11784746		17	33
19200	11784748		17	03
19200	11784751	6210-01-241-0427	17	04A
19200	11784752	6240-01-241-7563	17	048
19200	11784789		17	15
19200	11784790		17	27
19200	11784802	5985-01-241-7565	15	01
19200	11784804		15	02
19200	11784808		15	12
19200	11784811		15	13
19200	11784814		15	04
19200	11784817		15	05
19200	11784837	5305-01-235-1805	15	03
19200	11784849-1		17	16
19200	11785164		17	19
19200	11785549		10	01
19200	11829423		14	01
19200	12598336	4320-01-342-2401	08	29
19200	12598337		17	14
19200	12599347-1		09	01
19200	12599347-2	6145-01-214-4016	06	74
19200	12599347-3	6145-01-385-2711	04	01
			05	03
19200	12599363	6920-01-350-7760	01	04
19200	12934455	6130-01-322-0258	13	02
19200	12934456	6150-01-354-4394	13	01
19200	12934457	6150-01-354-4395	13	03
19200	12934458		14	06
19200	12934460	5340-01-373-8829	14	35
19200	12934462	5961-01-364-8045	14	34
19200	12934465	5950-01-349-3193	14	29
19200	12934470	6150-01-361-4734	14	19
19200	12934471	5925-01-349-2227	14	05
19200	12934473		14	31
19200	12934474		14	40
19200	12934478	5330-01-396-7215	14	23
19200	12950811		01	08
19200	12950861	6685-01-365-1407	15	10

**CROSS-REFERENCE INDEXES  
PART NUMBER INDEX**

<b>CAGEC</b>	<b>PART NUMBER</b>	<b>STOCK NUMBER</b>	<b>FIG.</b>	<b>ITEM</b>
19200	12950862	6685-01-365-1408	17	36
19200	12974102	5895-01-394-1714	01	05
65150	20-AA01F0		07	14
65150	20-AB02D0		07	17
65150	20-AC0100		07	13
65150	20-AC02H0		07	11
65150	244IC02H0		07	16
65150	2521L01D0		07	12
65150	2611001D0		07	10
65150	271HC02H0		07	15
65150	302CD0000		07	04
81349	39TB4	5940-00-983-6099	14	39
65150	402122300		07	09
65150	452000001		07	05
94433	61143	5340-01-235-1960	08	49
19200	9353945	5940-01-158-4521	14	42
19200	9354182-1	7690-01-163-1560	14	02
19200	9354183	5940-01-158-4518	14	41
19200	9356077	6150-01-369-0285	12	05
19200	9356078	5935-01-367-4430	12	04
19200	9356098	6130-01-350-7763	16	03
19200	9356185		01	02
19200	9356194	6135-01-211-6911	12	06
19200	9360576	5930-01-303-1296	08	24
19200	9360577	5998-01-374-2340	06	50
19200	9360588		17	04
19200	9365816	5940-01-375-6597	06	89
19200	9365840	5340-01-198-0230	14	16
19200	9375712	6150-01-235-1975	-08	45
19200	9375713	6150-01-235-1974	08	20
19200	9375714	6150-01-235-1976	08	26
19200	9375717	5935-01-239-1549	08	44
			14	12
19200	9375718	5935-01-239-1550	08	40
			14	09
			15	14
19200	9375725		08	30
19200	9375726	4730-01-374-7803	08	11
19200	9375727		08	11
19200	9375729	5310-01-235-1922	08	41
19200	9375730	5920-01-239-1551	08	37
19200	9375731	6920-01-235-1769	08	27
19200	9375734	6145-01-239-6988	01	06
19200	9375736	9390-01-238-8184	02	23
19200	9375737	6150-01-238-9872	01	07
19200	9375740		08	05
19200	9375741		12	01
19200	9375742		15	09
19200	9375743	5330-01-235-1875	08	06
19200	9375746	4720-01-235-1771	08	31
19200	9375747	4720-01-235-1768	02	62
19200	9375748	4720-01-235-1770	08	38

CROSS-REFERENCE INDEXES  
PART NUMBER INDEX

CAGEC	PART NUMBER	STOCK NUMBER	FIGURE	ITEM
19200	9375750		15	06
19200	9375751	5995-01-239-1552	08	09
19200	9375752	5340-01-235-1772	08	34
19200	9375753		08	47
19200	9375754	6920-01-241-6111	08	10
19200	9375758	6920-01-239-1548	02	61
19200	9375759	5340-01-241-0430	02	02
19200	9375761	5340-01-235-0233	02	29
19200	9384688	5935-01-206-0218	06	62

**By Order of the Secretary of the Army:**

DENNIS J. REIMER  
*General, United States Army*  
*Chief of Staff*

Official:

JOEL .HUDSON  
*Administrative Assistant to the*  
*Secretary of the Army*  
02698

**DISTRIBUTION:** To be distributed in accordance with the initial distribution number (IDN) 372436, requirements for TM 9-6920-742-24P-5.

☆ U.S. GOVERNMENT PRINTING OFFICE: 1996 - 545-039 / 40057

RECOMMENDED CHANGES TO EQUIPMENT TECHNICAL PUBLICATIONS



THEN... JOT DOWN THE DOPE ABOUT IT ON THIS FORM, CAREFULLY TEAR IT OUT, FOLD IT AND DROP IT IN THE MAIL!

**SOMETHING WRONG WITH THIS PUBLICATION?**

FROM: (PRINT YOUR UNIT'S COMPLETE ADDRESS)

DATE SENT

PUBLICATION NUMBER

PUBLICATION DATE

PUBLICATION TITLE

BE EXACT... PIN-POINT WHERE IT IS

PAGE NO.

PARA-GRAPH

FIGURE NO.

TABLE NO.

IN THIS SPACE TELL WHAT IS WRONG AND WHAT SHOULD BE DONE ABOUT IT:

TEAR ALONG PERFORATED LINE

PRINTED NAME, GRADE OR TITLE, AND TELEPHONE NUMBER

SIGN HERE:

DA FORM 2028-2  
1 JUL 79

PREVIOUS EDITIONS ARE OBSOLETE.

P.S.—IF YOUR OUTFIT WANTS TO KNOW ABOUT YOUR RECOMMENDATION MAKE A CARBON COPY OF THIS AND GIVE IT TO YOUR HEADQUARTERS.

**PIN : 075059-000**